



NCDA&CS

Plant Industry Division
Plant Protection Section

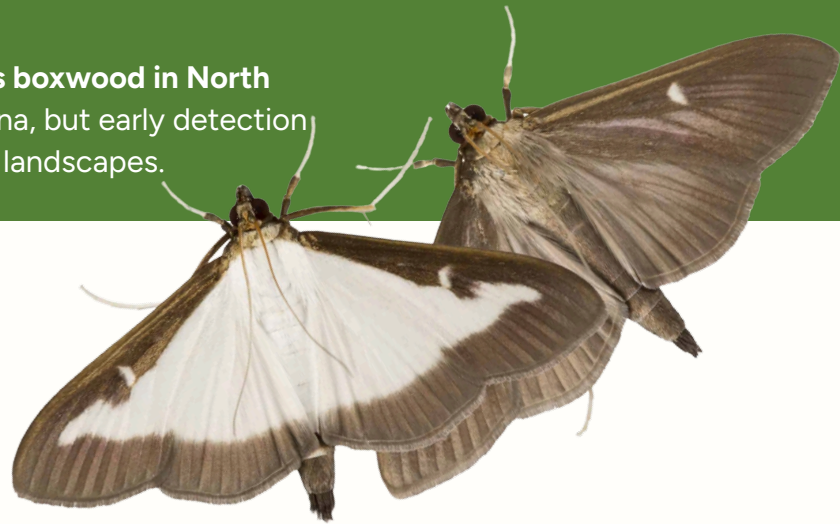
PEST WATCH

Box Tree Moth

Cydalima perspectalis

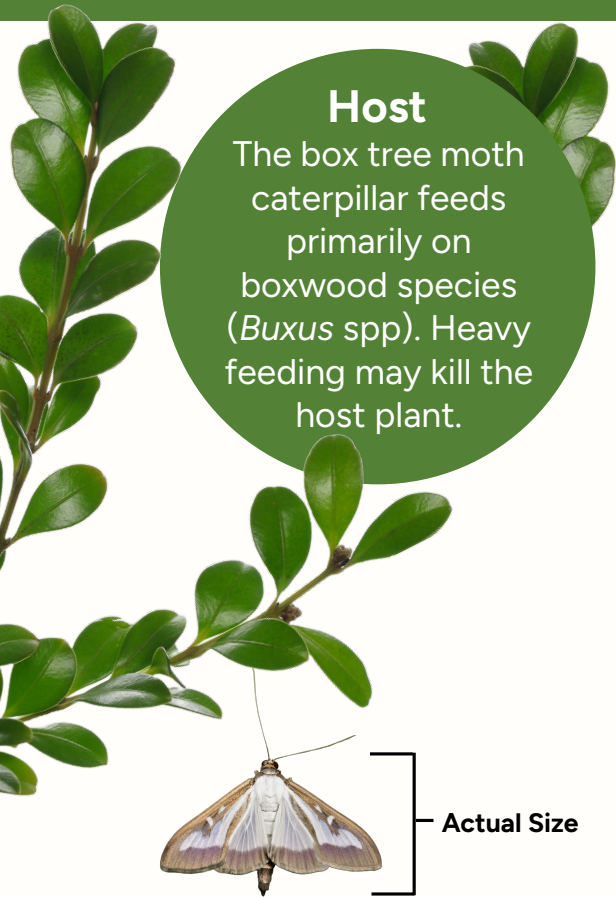
(Lepidoptera: Crambidae)

This invasive insect is **the only pest that defoliates boxwood in North America**. It has **not** yet been found in North Carolina, but early detection is critical to protect North Carolina's nurseries and landscapes.

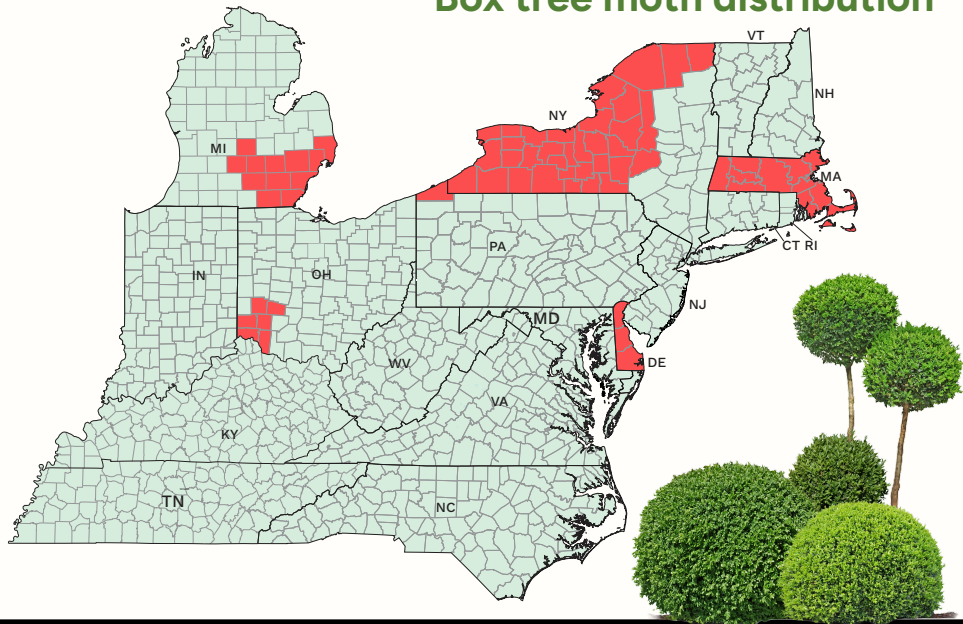


Host

The box tree moth caterpillar feeds primarily on boxwood species (*Buxus* spp). Heavy feeding may kill the host plant.



Box tree moth distribution



WHAT TO DO:



Collect a specimen: If you suspect you have found a Box Tree Moth please collect a specimen. We will assist you with specimen submission.



Take a picture: If you aren't sure if what you're looking at is a Box Tree Moth you can submit a photograph. Please include the location & date of the find and a size reference (e.g. a coin).



Report a find: Report the potential find and submit a photo to badbug@ncagr.gov



Steve Troxler, Commissioner of Agriculture

Dr. Bill Foote, Plant Industry Division Director, NC Department of Agriculture & Consumer Services

For up to date information please visit:
<https://www.ncagr.gov/divisions/plant-industry/plant-protection>

SIGNS AND SYMPTOMS

EARLY STAGE CATERPILLAR

In the initial phase of growth, caterpillars consume the lower leaf layer, resulting in distinct patches of damage in leaves called "window-paning." You may also see round green/brown droppings called frass.



LATE STAGE CATERPILLAR



2-5 generations can emerge each year! As populations grow, they will take bigger bites of leaves, and their webbing will gradually spread over the plant. A severe infestation has the potential to be fatal for the plant.



HIBERNATING CATERPILLAR

As winter approaches, the caterpillar constructs a protective shield by binding leaves together with its webbing. They resume feeding when the temperature rises.



Steve Troxler, Commissioner of Agriculture

Dr. Bill Foote, Plant Industry Division Director, NC Department of Agriculture & Consumer Services

For up to date information please visit:

<https://www.ncagr.gov/divisions/plant-industry/plant-protection>