

HAN

SCULPTURE METAL CRAFT LEATHER WORKING POTTERY
FABRIC PAINTING WOODWORKING GOURD CRAFTING
SCRAPBOOKING LEGOS PAPER CRAFTING CALLIGRAPHY MOSAICS
PAINTED ROCKS STAINED GLASS BEADED JEWELRY EGG ART & MORE

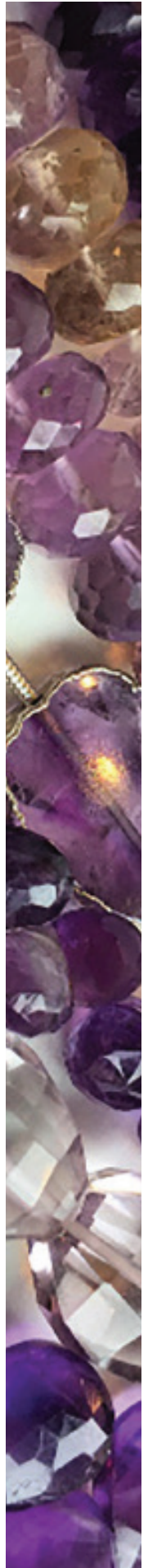
- Exhibit Manager: Sandra Dunbar
- Open to all residents of North Carolina.
- Pre-registration is required.
- Registration deadline is Monday, September 15, 2025.
- The State of North Carolina will require submission of a NC Substitute W-9 prior to making any payment of \$600 or greater or any payment that results in a total of \$600 or more during one calendar year from the North Carolina Department of Agriculture and Consumer Services to any individual or entity. All exhibitors are strongly encouraged to complete and upload the NC Substitute W-9 Form to prevent any delay in receiving premium prize money.
- Deliver exhibits to the Commercial Building on Saturday, October 11 and Sunday, October 12, 8 am to 6 pm.
- Call 919 839 4513 for details concerning entries released from other fairs.
- Submit questions to: ncsfCompetitions@ncagr.gov
- General Rules and Regulations of the Fair will govern this department.
- Mailed exhibits must be received by Saturday, October 11.
- Mailed in entry forms must be sent to:
NC State Fair Entry Dept.
1010 Mail Service Center
Raleigh NC 27699-1010
- Exhibits will be released on Monday, October 27, 2025. Pick up exhibits at the Commercial/Education Building. The Fair is not responsible for exhibits left after 6 pm.
- Exhibits that are typically hung must be ready to hang with one wire hanger, not alligator hooks or sawtoothed hangers.



Faircrafts

HANDICRAFTS DEPARTMENTAL RULES & REGULATIONS

- The General Fair Rules and Regulations will govern this department. Look for them at the back of this chapter. Be sure to read these rules before entering or competing in this department.
- The age categories for child and teen are determined as of January 1, 2025.
- Entries must be made by the exhibitor, and completed since the 2024 Fair.
- No perishable components (i.e. foods, undried gourds, boiled eggs, raw eggs, etc.) or banned components (i.e. feathers from Federally protected species, etc.) will be accepted. No guns or replicas of guns will be accepted in any category. No weapons or symbols of weapons. No nudity or anything controversial permitted.
- No purchased items will be accepted. All designs must be original to the exhibitor.
- No advertising is permitted on exhibits.
- One entry per person, per Class.
- All entries must be less than 24 Inches in any dimension unless noted.
- All entries must be less than 30 lbs.
- Typically hung items must be ready to hang with a secure wire across the back. No alligator hooks or sawtoothed hangers.
- Entering items in the correct category is the responsibility of the exhibitor. Items entered incorrectly may be subject to disqualification.
- Entrant status definitions:
 - Professional** - This division replaces the "Experienced" designation. A professional is considered anyone who earns income from selling their craft, or teaching their craft. This designation is also for expert or master craftsmen and repeat blue ribbon winners (3 blue ribbons won in a consecutive years in the same Class number).
 - Amateur** - Any entrant who is not in the above category is considered an Amateur. This division replaces the "Novice" category in past competitions.
- Display space for exhibits is limited. Some categories will have specific size limits. The NC State Fair does not guarantee that all entries will be displayed.
- To allow for impartial judging, remove or cover any names or other identifying personal information on the entry. Initials are acceptable.
- Since entries will be moved several times prior to and after judging, exhibitors are responsible for securing the stability of their entry or entries to prevent damage and loss.
- Security Guard service is provided in this department and every precaution is taken to protect all articles. The North Carolina State Fair nor any of its employees will be held responsible for loss or damage to any articles, properties or persons participating in this department.

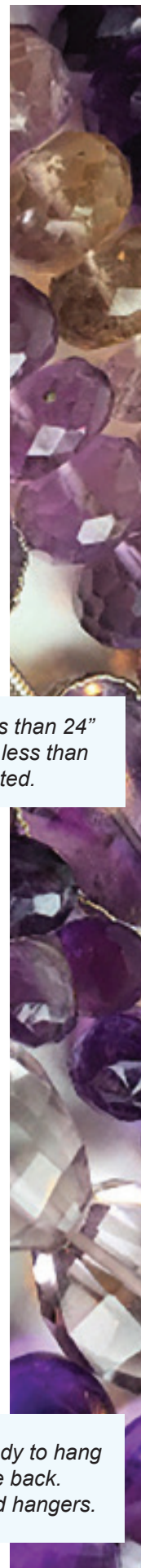


DIVISION 101 – ADULT PROFESSIONAL HANDICRAFTS 1st: \$15 2nd: \$12 3rd: \$10

- Class 01 SCULPTURE, TRADITIONAL SCULPTURE *Subtractive, in-the-round, wax, modeling clay, wood or stone. Not listed elsewhere.*
- Class 02 SCULPTURE, MIXED MEDIA SCULPTURE *Any technique. Not listed elsewhere.*
- Class 03 SCULPTURE, 3D PRINTED MODEL OR FIGURE *No AI generated sculpture allowed.*
- Class 04 HAND FORMED METAL CRAFT *Any metal. No jewelry*
- Class 05 HAMMER FORMED METAL CRAFT *Any metal. No jewelry*
- Class 06 POWER HAMMER FORMED METAL CRAFT *Maximum 36" dimension*
- Class 07 LEATHERWORK TOOLED LEATHER
- Class 09 POTTERY, SLIP CAST CERAMICS *Glazed or stained*
- Class 10 POTTERY, HAND FORMED POTTERY *Glazed or stained*
- Class 11 POTTERY, WHEEL THROWN POTTERY *Glazed, stained, embellished*
- Class 12 POTTERY, CLAY SCULPTURE *Fired clay, any subject*
- Class 13 FABRIC PAINTING, STENCILED *Stenciled design. Must be ready to hang*
- Class 14 FABRIC PAINTING, ORIGINAL *Original design. Must be ready to hang*
- Class 15 STENCILING *Any surface except fabric, including mixed media*
- Class 16 WOOD/GLASS/FURNITURE *Including mixed media*
- Class 17 HOLIDAY DECORATION *Any holiday, includes mixed media. No ornaments.*
- Class 18 WOODWORKING, HAND CARVED WOOD *Any item*
- Class 19 WOODWORKING, POWER CARVED WOOD *Any item*
- Class 20 WOODWORKING, LATHE WORKED WOOD *Any item*
- Class 21 WOODWORKING, WOOD JOINERY *Any item*
- Class 22 WOODWORKING, WOODEN TOY *Original design*
- Class 23 WOODWORKING, WOODEN TOY FROM KIT *Design from a pre-cut kit*
- Class 24 WOODWORKING, CARVED WOOD WALKING STICK *Any technique. Any size.*
- Class 25 WOODBURNING *Flat boards, decorated objects, etc.*
- Class 26 BASKETRY, RIBBED BASKET *18 Inch Maximum Dimension*
- Class 27 BASKETRY, FLAT REED BASKET *18 Inch Maximum Dimension*
- Class 28 BASKETRY, ROUND REED BASKET *18 Inch Maximum Dimension*
- Class 29 BASKETRY, MOLD WOVEN BASKET *18 Inch Maximum Dimension*
- Class 30 BASKETRY, HAND PROCESSED NATURAL MATERIALS BASKET
18 Inch Maximum Dimension. Bark, willow, ash, vines, splint (not reeds). Mold woven not included.
- Class 31 BASKETRY, NATURAL MATERIALS COILED BASKET *18 Inch Maximum Dimension. Pine needles, sweet grass, leaves of iris, cattails, corn husks, rush, any other coiled natural materials.*
- Class 32 BASKETRY, WAXED LINEN BASKET *18 Inch Maximum Dimension*
- Class 33 BASKETRY, SMALL BASKET *10 Inch Maximum Dimension*
- Class 34 BASKETRY, PINE NEEDLE BASKET *8 Inch Maximum Dimension*
- Class 35 BASKETRY, MINIATURE BASKET *5 Inch Maximum Dimension*
- Class 36 ANY HERITAGE CRAFT *36 Inch Maximum Dimension*
- Class 37 JEWELRY, STRUNG BEAD JEWELRY
- Class 38 JEWELRY, WOVEN BEADED JEWELRY
- Class 39 JEWELRY, WIREWORK JEWELRY
- Class 40 JEWELRY, METALSMITHING JEWELRY

*All entries must be less than 24"
in any dimension and less than
30 lbs unless noted.*

*Typically hung items must be ready to hang
with a secure wire across the back.
No alligator hooks or sawtoothed hangers.*



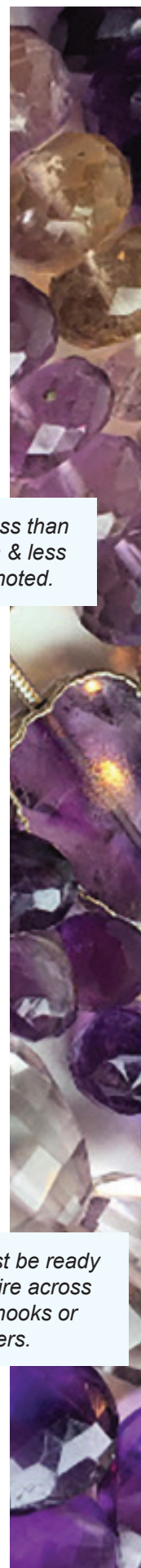
- Class 41 JEWELRY, MIXED MEDIA JEWELRY
- Class 42 GOURDS, PAINTED GOURD *Paint only. No plastic gourds. Less than 24".*
- Class 43 GOURDS, CARVED GOURD *Can also be painted. No plastic gourds. Less than 24".*
- Class 44 GOURDS, EMBELLISHED GOURD *Can also be painted & carved. No plastic gourds.*
- Class 45 GOURDS, GOURD BIRDHOUSE *Any technique. No plastic gourds. Less than 24".*
- Class 51 PAPERCRAFT, HOLIDAY HAND MADE CARD
- Class 52 PAPERCRAFT, CREATIVE HAND CUT CARD *Embossed, crimped or folded by hand.*
- Class 53 PAPERCRAFT, HAND LETTERED CARD *Calligraphy*
- Class 54 ARTIST TRADING CARDS *Set of four, 2½ X 3½, securely displayed in one clear envelope.*
- Class 55 PAINTED ROCK - MANDALA *Repeated design. One pound or less.*
- Class 58 PAINTED ROCK - PLANT OR ANIMAL *Look like a plant or animal. One pound or less.*
- Class 59 LEGOS *Original design. Maximum 15" any direction. No guns or weapons.*
- Class 60 LEGOS *North Carolina themed design. Maximum 15" any direction. No guns or weapons.*
- Class 61 WREATHS *36 Inch Maximum Dimension.*
- Class 62 ORNAMENTS *Including Gourd Ornaments*
- Class 64 ORIGAMI AND QUILLING
- Class 66 POLYMER CLAY *Sculpy, Bread Dough, Model Magic, etc.*
- Class 67 GLASSWORK, KILN-FORMED *Any item. 24 Inch Maximum Dimension.*
- Class 68 GLASSWORK, STAINED GLASS *Any item using lead or copper-foil method.
36 Inch Maximum Dimension*
- Class 69 GLASSWORK, FLAME WORKED, BLOWN GLASS *Any item. 24 Inch Maximum Dimension*
- Class 70 MOSAIC *No paper, plastic or foam tiles. 24 Inch Maximum Dimension*
- Class 71 MOSAIC, MIXED MEDIA *Pebbles, seashells, beach glass, etc. 24 Inch Maximum Dimension*
- Class 72 DECORATED SEASHELLS, *1lb or less*
- Class 73 BARN QUILT *36 Inch Maximum Dimension*
- Class 75 Furniture Caning

*All entries must be less than
24" in any dimension & less
than 30 lbs unless noted.*

DIVISION 102 – ADULT AMATEUR HANDICRAFTS 1st: \$15 2nd: \$12 3rd: \$10

- Class 01 SCULPTURE, TRADITIONAL SCULPTURE *Subtractive, in-the-round, wax, modeling clay, wood or stone. Not listed elsewhere.*
- Class 02 SCULPTURE, MIXED MEDIA SCULPTURE *Any technique. Not listed elsewhere.*
- Class 03 SCULPTURE, 3D PRINTED MODEL OR FIGURE *No AI generated sculpture allowed.*
- Class 04 HAND FORMED METAL CRAFT *Any metal. No jewelry*
- Class 05 HAMMER FORMED METAL CRAFT *Any metal. No jewelry*
- Class 06 POWER HAMMER FORMED METAL CRAFT *Maximum 36"*
- Class 07 LEATHERWORK TOOLED LEATHER
- Class 08 LEATHERWORKING *Any kit item*
- Class 09 POTTERY, SLIP CAST CERAMICS *Glazed or stained*
- Class 10 POTTERY, HAND FORMED POTTERY *Glazed or stained*
- Class 11 POTTERY, WHEEL THROWN POTTERY *Glazed, stained, embellished*
- Class 12 POTTERY, CLAY SCULPTURE *Fired clay, any subject*
- Class 13 FABRIC PAINTING, STENCILED *Stenciled design. Must be ready to hang*
- Class 14 FABRIC PAINTING, ORIGINAL *Original design. Must be ready to hang*

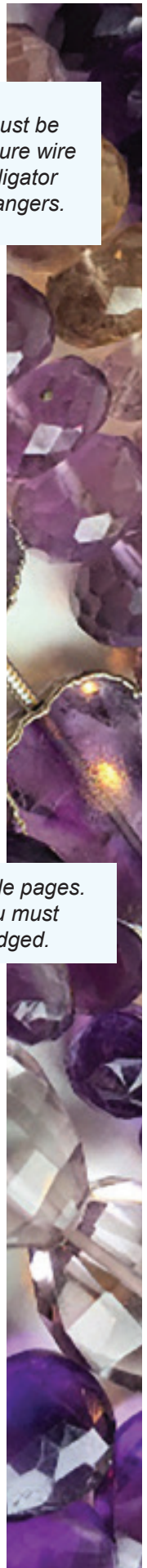
*Typically hung items must be ready
to hang with a secure wire across
the back. No alligator hooks or
sawtoothed hangers.*



- Class 15 STENCILING *Any surface except fabric, including mixed media*
- Class 16 WOOD/GLASS/FURNITURE *Including mixed media*
- Class 17 HOLIDAY DECORATION *Any holiday, includes mixed media. No c*
- Class 18 WOODWORKING, HAND CARVED WOOD *Any item*
- Class 19 WOODWORKING, POWER CARVED WOOD *Any item*
- Class 20 WOODWORKING, LATHE WORKED WOOD *Any item*
- Class 21 WOODWORKING, WOOD JOINERY *Any item*
- Class 22 WOODWORKING, WOODEN TOY *Original design*
- Class 23 WOODWORKING, WOODEN TOY FROM KIT *Design from a pre-cut kit*
- Class 24 WOODWORKING, CARVED WOOD WALKING STICK *Any technique. Any size.*
- Class 25 WOODBURNING *Flat boards, decorated objects, etc.*
- Class 26 BASKETRY, RIBBED BASKET *18 Inch Maximum Dimension*
- Class 27 BASKETRY, FLAT REED BASKET *18 Inch Maximum Dimension*
- Class 28 BASKETRY, ROUND REED BASKET *18 Inch Maximum Dimension*
- Class 29 BASKETRY, MOLD WOVEN BASKET *18 Inch Maximum Dimension*
- Class 30 BASKETRY, HAND PROCESSED NATURAL MATERIALS BASKET
18 Inch Maximum Dimension. Bark, willow, ash, vines, splint (not reeds). Mold woven not included.
- Class 31 BASKETRY, NATURAL MATERIALS COILED BASKET *18 Inch Maximum Dimension. Pine needles, sweet grass, leaves of iris, cattails, corn husks, rush, any other coiled natural materials.*
- Class 32 BASKETRY, WAXED LINEN BASKET *18 Inch Maximum Dimension*
- Class 33 BASKETRY, SMALL BASKET *10 Inch Maximum Dimension*
- Class 34 BASKETRY, PINE NEEDLE BASKET *8 Inch Maximum Dimension*
- Class 35 BASKETRY, MINIATURE BASKET *5 Inch Maximum Dimension*
- Class 36 ANY HERITAGE CRAFT *36 Inch Maximum Dimension*
- Class 37 JEWELRY, STRUNG BEAD JEWELRY
- Class 38 JEWELRY, WOVEN BEADED JEWELRY
- Class 39 JEWELRY, WIREWORK JEWELRY
- Class 40 JEWELRY, METALSMITHING JEWELRY
- Class 41 JEWELRY, MIXED MEDIA JEWELRY
- Class 42 GOURDS, PAINTED GOURD *Paint only. No plastic gourds. Less than 24".*
- Class 43 GOURDS, CARVED GOURD *Can also be painted. No plastic gourds. Less than 24".*
- Class 44 GOURDS, EMBELLISHED GOURD *Can also be painted & carved. No plastic gourds.*
- Class 45 GOURDS, GOURD BIRDHOUSE *Any technique. No plastic gourds. Less than 24".*
- Class 46 SCRAPBOOKING, HERITAGE PAGE *Old pictures, family tree*
- Class 47 SCRAPBOOKING, BABY/KIDS PAGE
- Class 48 SCRAPBOOKING, TRAVEL/VACATION/HOLIDAY PAGE
- Class 49 SCRAPBOOKING, PETS PAGE
- Class 50 SCRAPBOOKING, TRIBUTE/MILITARY PAGE
- Class 51 PAPER CRAFT, HOLIDAY HAND MADE CARD
- Class 52 PAPER CRAFT, CREATIVE HAND CUT CARD *Embossed, crimped or folded by hand.*
- Class 53 PAPER CRAFT, HAND LETTERED CARD *Calligraphy*
- Class 54 ARTIST TRADING CARDS *Set of four, 2½ X 3½, securely displayed in one clear envelope.*
- Class 55 PAINTED ROCK - MANDALA *Repeated design. One pound or less.*

Typically hung items must be ready to hang with a secure wire across the back. No alligator hooks or sawtoothed hangers.

Scrapbooking entries are for single pages. If your entry has two sides, you must indicate which side is to be judged.



- Class 56 PAINTED ROCK - MESSAGE *Words in design. One pound or less.*
- Class 58 PAINTED ROCK - PLANT OR ANIMAL *Look like a plant or animal. One pound or less.*
- Class 59 LEGOS *Original design. Maximum 15" any direction. No guns or weapons.*
- Class 60 LEGOS *North Carolina themed design. Maximum 15" any direction. No guns or weapons.*
- Class 61 WREATHS *36 Inch Maximum Dimension.*
- Class 62 ORNAMENTS *Including Gourd Ornaments*
- Class 63 PAPIER MÂCHÉ *18 Inch Maximum Dimension*
- Class 64 ORIGAMI AND QUILLING
- Class 65 DECORATED FOOTWEAR *Shoe, boot, sandal, etc.*
- Class 66 POLYMER CLAY *Sculpy, Bread Dough, Model Magic, etc.*
- Class 67 GLASSWORK, KILN-FORMED *Any item. 24 Inch Maximum Dimension.*
- Class 68 GLASSWORK, STAINED GLASS *Any item using lead or copper-foil method.
36 Inch Maximum Dimension*
- Class 69 GLASSWORK, FLAME WORKED, BLOWN GLASS *Any item. 24 Inch Maximum Dimension*
- Class 70 MOSAIC *No paper, plastic or foam tiles. 24 Inch Maximum Dimension*
- Class 71 MOSAIC, MIXED MEDIA *Pebbles, seashells, beach glass, etc. 24 Inch Maximum Dimension*
- Class 72 DECORATED SEASHELLS, *1lb or less*
- Class 73 BARN QUILT *36 Inch Maximum Dimension*

- Class 74 EGG ART (Eggs must be blown) 1st: \$200 2nd: \$150 3rd: \$75

THEME: AMERICA 250 CELEBRATING THE GREAT AMERICAN STATE FAIR

Have your decorated blown chicken egg depict a day at the North Carolina State Fair!

The North Carolina Egg Association sponsors the Egg Art Category. All eggs entered must be the original ideas of the entrant and must be relevant to the 2025 NC State Fair.

Design requirements are:

- The decorated chicken egg has to depict the 2025 theme.
- Use a blown out chicken egg
- Small end of the egg should face up
- Egg should be free standing, without a base or stand (stand will be provided)
- First place winning entries become property of the NC Egg Association.

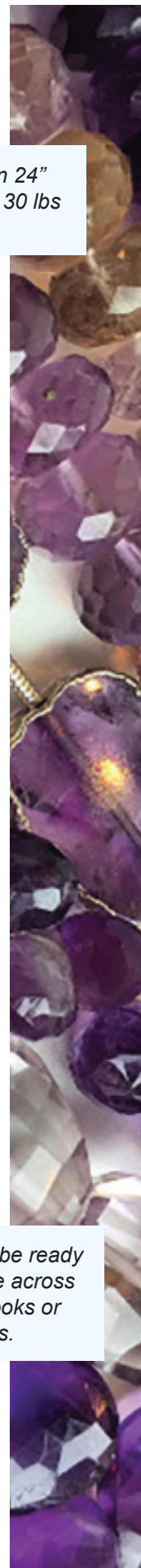
- Class 75 Furniture Caning

DIVISION 103 – TEEN HANDICRAFTS 13-17 YEARS OLD 1st: \$12 2nd: \$10 3rd: \$8

- Class 01 SCULPTURE, TRADITIONAL SCULPTURE *Subtractive, in-the-round, wax, modeling clay, wood or stone. Not listed elsewhere.*
- Class 02 SCULPTURE, MIXED MEDIA SCULPTURE *Any technique. Not listed elsewhere.*
- Class 03 SCULPTURE, 3D PRINTED MODEL OR FIGURE *No AI generated sculpture allowed.*
- Class 04 HAND FORMED METAL CRAFT *Any metal. No jewelry*
- Class 05 HAMMER FORMED METAL CRAFT *Any metal. No jewelry*
- Class 06 POWER HAMMER FORMED METAL CRAFT *Maximum 36*
- Class 07 LEATHERWORK TOOLED LEATHER
- Class 08 LEATHERWORKING *Any kit item*
- Class 09 POTTERY, SLIP CAST CERAMICS *Glazed or stained*
- Class 10 POTTERY, HAND FORMED POTTERY *Glazed or stained*
- Class 11 POTTERY, WHEEL THROWN POTTERY *Glazed, stained, embellished*
- Class 12 POTTERY, CLAY SCULPTURE *Fired clay, any subject*
- Class 13 FABRIC PAINTING, STENCILED *Stenciled design. Must be ready to hang*

All entries must be less than 24" in any dimension & less than 30 lbs unless noted.

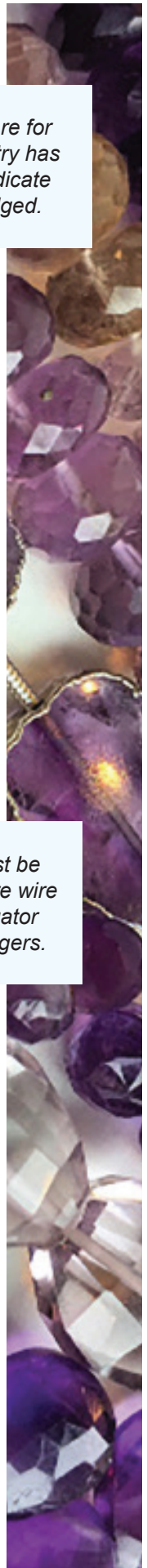
Typically hung items must be ready to hang with a secure wire across the back. No alligator hooks or sawtoothed hangers.



- Class 14 FABRIC PAINTING, ORIGINAL *Original design. Must be ready to hang*
- Class 15 STENCILING *Any surface except fabric, including mixed media*
- Class 16 WOOD/GLASS/FURNITURE *Including mixed media*
- Class 17 HOLIDAY DECORATION *Any holiday, includes mixed media. No c*
- Class 18 WOODWORKING, HAND CARVED WOOD *Any item*
- Class 19 WOODWORKING, POWER CARVED WOOD *Any item*
- Class 20 WOODWORKING, LATHE WORKED WOOD *Any item*
- Class 21 WOODWORKING, WOOD JOINERY *Any item*
- Class 22 WOODWORKING, WOODEN TOY *Original design*
- Class 23 WOODWORKING, WOODEN TOY FROM KIT *Design from a pre-cut kit*
- Class 24 WOODWORKING, CARVED WOOD WALKING STICK *Any technique. Any size.*
- Class 25 WOODBURNING *Flat boards, decorated objects, etc.*
- Class 26 BASKETRY, RIBBED BASKET *18 Inch Maximum Dimension*
- Class 27 BASKETRY, FLAT REED BASKET *18 Inch Maximum Dimension*
- Class 28 BASKETRY, ROUND REED BASKET *18 Inch Maximum Dimension*
- Class 29 BASKETRY, MOLD WOVEN BASKET *18 Inch Maximum Dimension*
- Class 30 BASKETRY, HAND PROCESSED NATURAL MATERIALS BASKET
18 Inch Maximum Dimension. Bark, willow, ash, vines, splint (not reeds). Mold woven not included.
- Class 31 BASKETRY, NATURAL MATERIALS COILED BASKET *18 Inch Maximum Dimension.
Pine needles, sweet grass, leaves of iris, cattails, corn husks, rush, any other coiled natural materials.*
- Class 32 BASKETRY, WAXED LINEN BASKET *18 Inch Maximum Dimension*
- Class 33 BASKETRY, SMALL BASKET *10 Inch Maximum Dimension*
- Class 34 BASKETRY, PINE NEEDLE BASKET *8 Inch Maximum Dimension*
- Class 35 BASKETRY, MINIATURE BASKET *5 Inch Maximum Dimension*
- Class 36 ANY HERITAGE CRAFT *36 Inch Maximum Dimension*
- Class 37 JEWELRY, STRUNG BEAD JEWELRY
- Class 38 JEWELRY, WOVEN BEADED JEWELRY
- Class 39 JEWELRY, WIREWORK JEWELRY
- Class 40 JEWELRY, METALSMITHING JEWELRY
- Class 41 JEWELRY, MIXED MEDIA JEWELRY
- Class 42 GOURDS, PAINTED GOURD *Paint only. No plastic gourds. Less than 24".*
- Class 43 GOURDS, CARVED GOURD *Can also be painted. No plastic gourds. Less than 24".*
- Class 44 GOURDS, EMBELLISHED GOURD *Can also be painted & carved. No plastic gourds.*
- Class 45 GOURDS, GOURD BIRDHOUSE *Any technique. No plastic gourds. Less than 24".*
- Class 46 SCRAPBOOKING, HERITAGE PAGE *Old pictures, family tree*
- Class 47 SCRAPBOOKING, BABY/KIDS PAGE
- Class 48 SCRAPBOOKING, TRAVEL/VACATION/HOLIDAY PAGE
- Class 49 SCRAPBOOKING, PETS PAGE
- Class 50 SCRAPBOOKING, TRIBUTE/MILITARY PAGE
- Class 51 PAPER CRAFT, HOLIDAY HAND MADE CARD
- Class 52 PAPER CRAFT, CREATIVE HAND CUT CARD *Embossed, crimped or folded by hand.*
- Class 53 PAPER CRAFT, HAND LETTERED CARD *Calligraphy*
- Class 54 ARTIST TRADING CARDS *Set of four, 2½ X 3½, securely displayed in one clear envelope.*

Scrapbooking entries are for single pages. If your entry has two sides, you must indicate which side is to be judged.

Typically hung items must be ready to hang with a secure wire across the back. No alligator hooks or sawtoothed hangers.



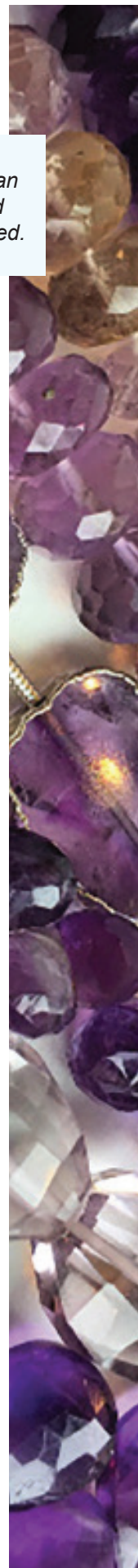
- Class 55 PAINTED ROCK - MANDALA *Repeated design. One pound or less.*
- Class 56 PAINTED ROCK - MESSAGE *Words in design. One pound or less.*
- Class 58 PAINTED ROCK - PLANT OR ANIMAL *Look like a plant or animal. One pound or less.*
- Class 59 LEGOS *Original design. Maximum 15" any direction. No guns or weapons.*
- Class 60 LEGOS *North Carolina themed design. Maximum 15" any direction. No guns or weapons.*
- Class 61 WREATHS *36 Inch Maximum Dimension.*
- Class 62 ORNAMENTS *Including Gourd Ornaments*
- Class 63 PAPIER MÂCHÉ *18 Inch Maximum Dimension*
- Class 64 ORIGAMI AND QUILLING
- Class 65 DECORATED FOOTWEAR *Shoe, boot, sandal, etc.*
- Class 66 POLYMER CLAY *Sculpy, Bread Dough, Model Magic, etc.*
- Class 67 GLASSWORK, KILN-FORMED *Any item. 24 Inch Maximum Dimension.*
- Class 68 GLASSWORK, STAINED GLASS *Any item using lead or copper-foil method.
36 Inch Maximum Dimension*
- Class 69 GLASSWORK, FLAME WORKED, BLOWN GLASS *Any item. 24 Inch Maximum Dimension*
- Class 70 MOSAIC *No paper, plastic or foam tiles. 24 Inch Maximum Dimension*
- Class 71 MOSAIC, MIXED MEDIA *Pebbles, seashells, beach glass, etc. 24 Inch Maximum Dimension*
- Class 72 DECORATED SEASHELLS, *1lb or less*
- Class 73 BARN QUILT *36 Inch Maximum Dimension*
- Class 74 EGG ART (Eggs must be blown) 1st: \$50 2nd: \$25 3rd: \$10
THEME: AMERICA 250 CELEBRATING THE GREAT AMERICAN STATE FAIR
 Have your decorated blown chicken egg depict a day at the North Carolina State Fair!
 The North Carolina Egg Association sponsors the Egg Art Category. All eggs entered must be the original ideas of the entrant and must be relevant to the 2025 NC State Fair.
 Design requirements are:
 • The decorated chicken egg has to depict the 2025 theme.
 • Use a blown out chicken egg
 • Small end of the egg should face up
 • Egg should be free standing, without a base or stand (stand will be provided)
 • First place winning entries become property of the NC Egg Association.

Class 75 Furniture Caning

DIVISION 104 – YOUTH HANDICRAFTS 10-12 YEARS OLD 1st: \$10 2nd: \$8 3rd: \$6

- Class 01 SCULPTURE, TRADITIONAL SCULPTURE *Subtractive, in-the-round, wax, modeling clay, wood or stone. Not listed elsewhere*
- Class 02 SCULPTURE, MIXED MEDIA SCULPTURE *Any technique. Not listed elsewhere.*
- Class 04 HAND FORMED METAL CRAFT *Any metal. No jewelry*
- Class 05 HAMMER FORMED METAL CRAFT *Any metal. No jewelry*
- Class 07 LEATHERWORK TOOLED LEATHER
- Class 08 LEATHERWORKING *Any kit item*
- Class 09 POTTERY, SLIP CAST CERAMICS *Glazed or stained*
- Class 10 POTTERY, HAND FORMED POTTERY *Glazed or stained*
- Class 11 POTTERY, WHEEL THROWN POTTERY *Glazed, stained, embellished*
- Class 12 POTTERY, CLAY SCULPTURE *Fired clay, any subject*
- Class 13 FABRIC PAINTING, STENCILED *Stenciled design. Must be ready to hang*
- Class 14 FABRIC PAINTING, ORIGINAL *Original design. Must be ready to hang*

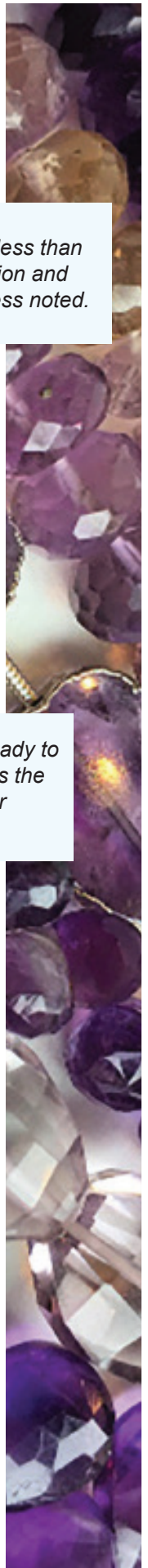
All entries must be less than
24" in any dimension and
less than 30 lbs unless noted.



- Class 15 STENCILING *Any surface except fabric, including mixed media*
- Class 16 WOOD/GLASS/FURNITURE *Including mixed media*
- Class 17 HOLIDAY DECORATION *Any holiday, includes mixed media. No ornaments.*
- Class 18 WOODWORKING, HAND CARVED WOOD *Any item*
- Class 19 WOODWORKING, POWER CARVED WOOD *Any item*
- Class 21 WOODWORKING, WOOD JOINERY *Any item*
- Class 22 WOODWORKING, WOODEN TOY *Original design*
- Class 23 WOODWORKING, WOODEN TOY FROM KIT *Design from a pre-cut kit*
- Class 24 WOODWORKING, CARVED WOOD WALKING STICK *Any technique. Any size.*
- Class 25 WOODBURNING *Flat boards, decorated objects, etc.*
- Class 26 BASKETRY, RIBBED BASKET *18 Inch Maximum Dimension*
- Class 27 BASKETRY, FLAT REED BASKET *18 Inch Maximum Dimension*
- Class 28 BASKETRY, ROUND REED BASKET *18 Inch Maximum Dimension*
- Class 29 BASKETRY, MOLD WOVEN BASKET *18 Inch Maximum Dimension*
- Class 30 BASKETRY, HAND PROCESSED NATURAL MATERIALS BASKET
18 Inch Maximum Dimension. Bark, willow, ash, vines, splint (not reeds). Mold woven not included.
- Class 31 BASKETRY, NATURAL MATERIALS COILED BASKET *18 Inch Maximum Dimension.
Pine needles, sweet grass, leaves of iris, cattails, corn husks, rush, any other coiled natural materials.*
- Class 32 BASKETRY, WAXED LINEN BASKET *18 Inch Maximum Dimension*
- Class 33 BASKETRY, SMALL BASKET *10 Inch Maximum Dimension*
- Class 34 BASKETRY, PINE NEEDLE BASKET *8 Inch Maximum Dimension*
- Class 35 BASKETRY, MINIATURE BASKET *5 Inch Maximum Dimension*
- Class 36 ANY HERITAGE CRAFT *36 Inch Maximum Dimension*
- Class 37 JEWELRY, STRUNG BEAD JEWELRY
- Class 38 JEWELRY, WOVEN BEADED JEWELRY
- Class 39 JEWELRY, WIREWORK JEWELRY
- Class 40 JEWELRY, METALSMITHING JEWELRY
- Class 41 JEWELRY, MIXED MEDIA JEWELRY
- Class 42 GOURDS, PAINTED GOURD *Paint only. No plastic gourds. Less than 24".*
- Class 43 GOURDS, CARVED GOURD *Can also be painted. No plastic gourds. Less than 24".*
- Class 44 GOURDS, EMBELLISHED GOURD *Can also be painted & carved. No plastic gourds.*
- Class 45 GOURDS, GOURD BIRDHOUSE *Any technique. No plastic gourds. Less than 24".*
- Class 46 SCRAPBOOKING, HERITAGE PAGE *Old pictures, family tree*
- Class 47 SCRAPBOOKING, BABY/KIDS PAGE
- Class 48 SCRAPBOOKING, TRAVEL/VACATION/HOLIDAY PAGE
- Class 49 SCRAPBOOKING, PETS PAGE
- Class 50 SCRAPBOOKING, TRIBUTE/MILITARY PAGE
- Class 51 PAPER CRAFT, HOLIDAY HAND MADE CARD
- Class 52 PAPER CRAFT, CREATIVE HAND CUT CARD *Embossed, crimped or folded by hand.*
- Class 54 ARTIST TRADING CARDS *Set of four, 2½ X 3½, securely displayed in one clear envelope.*
- Class 55 PAINTED ROCK - MANDALA *Repeated design. One pound or less.*
- Class 56 PAINTED ROCK - MESSAGE *Words in design. One pound or less.*
- Class 57 PAINTED ROCK - SINGLE COLOR *One color design. One pound or less.*

All entries must be less than 24" in any dimension and less than 30 lbs unless noted.

Typically hung items must be ready to hang with a secure wire across the back. No alligator hooks or sawtoothed hangers.

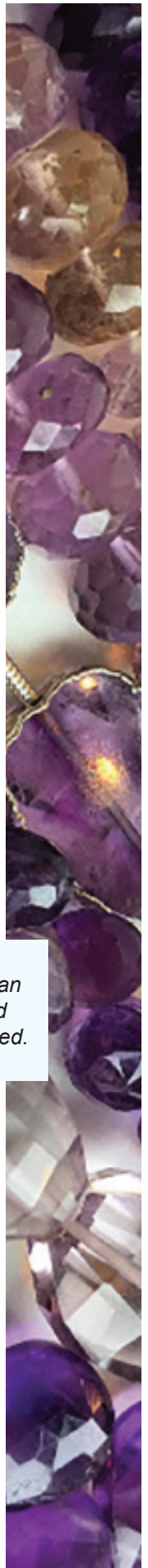


- Class 58 PAINTED ROCK - PLANT OR ANIMAL *Look like a plant or animal. One pound or less.*
- Class 59 LEGOS *Original design. Maximum 15" any direction. No guns or weapons.*
- Class 60 LEGOS *North Carolina themed design. Maximum 15" any direction. No guns or weapons.*
- Class 61 WREATHS *36 Inch Maximum Dimension.*
- Class 62 ORNAMENTS *Including Gourd Ornaments*
- Class 63 PAPIER MÂCHÉ *18 Inch Maximum Dimension*
- Class 64 ORIGAMI AND QUILLING
- Class 65 DECORATED FOOTWEAR *Shoe, boot, sandal, etc.*
- Class 66 POLYMER CLAY *Sculpy, Bread Dough, Model Magic, etc.*
- Class 67 STAINED GLASS *Any item real or fake stained glass. 24 Inch Maximum Dimension.*
- Class 68 GLASSWORK, STAINED GLASS *Any item using lead or copper-foil method.
36 Inch Maximum Dimension*
- Class 70 MOSAIC *No paper, plastic or foam tiles. 24 Inch Maximum Dimension*
- Class 71 MOSAIC, MIXED MEDIA *Pebbles, seashells, beach glass, etc. 24 Inch Maximum Dimension*
- Class 72 DECORATED SEASHELLS, *1lb or less*
- Class 73 BARN QUILT *36 Inch Maximum Dimension*
- Class 75 Furniture Caning

DIVISION 105 – CHILD HANDICRAFTS 5-9 YEARS OLD 1st: \$10 2nd: \$8 3rd: \$6

- Class 01 SCULPTURE, TRADITIONAL SCULPTURE *Subtractive, in-the-round, wax, modeling clay, wood or stone. Not listed elsewhere*
- Class 02 SCULPTURE, MIXED MEDIA SCULPTURE *Any technique. Not listed elsewhere.*
- Class 08 LEATHERWORKING *Any kit item*
- Class 09 POTTERY, SLIP CAST CERAMICS *Glazed or stained*
- Class 10 POTTERY, HAND FORMED POTTERY *Glazed or stained*
- Class 12 POTTERY, CLAY SCULPTURE *Fired clay, any subject*
- Class 13 FABRIC PAINTING, STENCILED *Stenciled design. Must be ready to display*
- Class 14 FABRIC PAINTING, ORIGINAL *Original design. Must be ready to display*
- Class 15 STENCILING *Any surface except fabric, including mixed media*
- Class 22 WOODWORKING, WOODEN TOY *Original design Not From a kit*
- Class 23 WOODWORKING, WOODEN TOY FROM KIT *Design from a pre-cut kit*
- Class 24 WOODWORKING, CARVED WOOD WALKING STICK *Any technique. Any size.*
- Class 25 WOODBURNING *Flat boards, decorated objects, etc.*
- Class 31 BASKETRY, NATURAL MATERIALS COILED BASKET *18 Inch Maximum Dimension.
Pine needles, sweet grass, leaves of iris, cattails, corn husks, rush, any other coiled natural materials.*
- Class 33 BASKETRY, SMALL BASKET *10 Inch Maximum Dimension*
- Class 34 BASKETRY, PINE NEEDLE BASKET *8 Inch Maximum Dimension*
- Class 35 BASKETRY, MINIATURE BASKET *5 Inch Maximum Dimension*
- Class 36 ANY HERITAGE CRAFT *36 Inch Maximum Dimension*
- Class 37 JEWELRY, STRUNG BEAD JEWELRY
- Class 41 JEWELRY, MIXED MEDIA JEWELRY
- Class 42 GOURDS, PAINTED GOURD *Paint only. No plastic gourds. Less than 24".*
- Class 44 GOURDS, EMBELLISHED GOURD *Can also be painted & carved. No plastic gourds.*

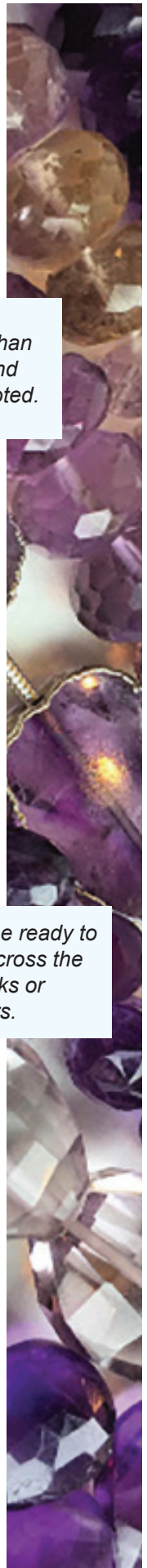
*All entries must be less than
24" in any dimension and
less than 30 lbs unless noted.*



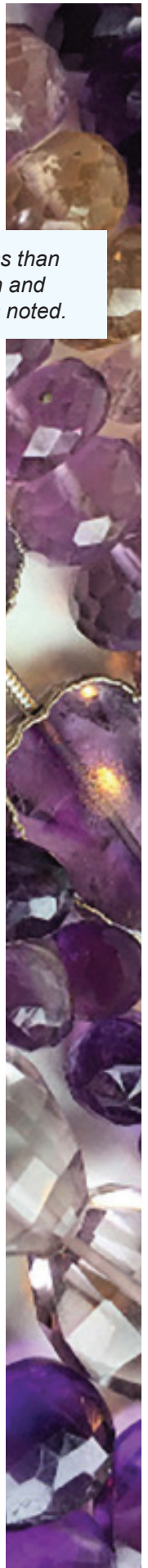
- Class 45 GOURDS, GOURD BIRDHOUSE *Any technique. No plastic gourds. Less than 24".*
- Class 46 SCRAPBOOKING, HERITAGE PAGE *Old pictures, family tree*
- Class 49 SCRAPBOOKING, PETS PAGE
- Class 50 SCRAPBOOKING, TRIBUTE/MILITARY PAGE
- Class 51 PAPERCRAFT, HOLIDAY HAND MADE CARD
- Class 55 PAINTED ROCK - MANDALA *Repeated design. One pound or less.*
- Class 56 PAINTED ROCK - MESSAGE *Words in design. One pound or less.*
- Class 57 PAINTED ROCK - SINGLE COLOR *One color design. One pound or less.*
- Class 58 PAINTED ROCK - PLANT OR ANIMAL *Look like a plant or animal. One pound or less.*
- Class 59 LEGOS *Original design. Maximum 15" any direction. No guns or weapons.*
- Class 60 LEGOS *North Carolina themed design. Maximum 15" any direction. No guns or weapons.*
- Class 61 WREATHS *36 Inch Maximum Dimension.*
- Class 62 ORNAMENTS *Including Gourd Ornaments*
- Class 63 PAPIER MÂCHÉ *18 Inch Maximum Dimension*
- Class 64 ORIGAMI AND QUILLING
- Class 65 DECORATED FOOTWEAR *Shoe, boot, sandal, etc.*
- Class 66 POLYMER CLAY *Sculpy, Bread Dough, Model Magic, etc.*
- Class 67 STAINED GLASS *Any item real or fake stained glass. 24 Inch Maximum Dimension.*
- Class 70 MOSAIC *No paper, plastic or foam tiles. 24 Inch Maximum Dimension*
- Class 71 MOSAIC, MIXED MEDIA *Pebbles, seashells, beach glass, etc. 24 Inch Maximum Dimension*
- Class 72 DECORATED SEASHELLS, *1lb or less*
- Class 73 BARN QUILT *36 Inch Maximum Dimension*
- Class 75 Furniture Caning

DIVISION 106 – SPECIAL NEEDS HANDICRAFTS 1st: \$10 2nd: \$8 3rd: \$6

- Class 01 SCULPTURE, TRADITIONAL SCULPTURE *Subtractive, in-the-round, any material, clay, wood or stone. Not listed elsewhere.*
- Class 02 SCULPTURE, MIXED MEDIA SCULPTURE *Any technique. Not listed elsewhere.*
- Class 04 HAND FORMED METAL CRAFT *Any metal. No jewelry*
- Class 05 HAMMER FORMED METAL CRAFT *Any metal. No jewelry*
- Class 07 LEATHERWORK TOOLED LEATHER
- Class 08 LEATHERWORKING *Any kit item*
- Class 09 POTTERY, SLIP CAST CERAMICS *Glazed or stained*
- Class 10 POTTERY, HAND FORMED POTTERY *Glazed or stained*
- Class 11 POTTERY, WHEEL THROWN POTTERY *Glazed, stained, embellished*
- Class 12 POTTERY, CLAY SCULPTURE *Fired clay, any subject*
- Class 13 FABRIC PAINTING, STENCILED *Stenciled design. Must be ready to hang*
- Class 14 FABRIC PAINTING, ORIGINAL *Original design. Must be ready to hang*
- Class 15 STENCILING *Any surface except fabric, including mixed media*
- Class 16 WOOD/GLASS/FURNITURE *Including mixed media*
- Class 17 HOLIDAY DECORATION *Any holiday, includes mixed media. No ornaments.*
- Class 18 WOODWORKING, HAND CARVED WOOD *Any item*
- Class 19 WOODWORKING, POWER CARVED WOOD *Any item*
- Class 20 WOODWORKING, LATHE WORKED WOOD *Any item*



- Class 21 WOODWORKING, WOOD JOINERY *Any item*
- Class 22 WOODWORKING, WOODEN TOY *Original design*
- Class 23 WOODWORKING, WOODEN TOY FROM KIT *Design from a pre-cut kit*
- Class 24 WOODWORKING, CARVED WOOD WALKING STICK *Any technique. Any size.*
- Class 25 WOODBURNING *Flat boards, decorated objects, etc.*
- Class 26 BASKETRY, RIBBED BASKET *18 Inch Maximum Dimension*
- Class 27 BASKETRY, FLAT REED BASKET *18 Inch Maximum Dimension*
- Class 28 BASKETRY, ROUND REED BASKET *18 Inch Maximum Dimension All entries must be less than*
- Class 29 BASKETRY, MOLD WOVEN BASKET *18 Inch Maximum Dimension 24" in any dimension and*
- Class 30 BASKETRY, HAND PROCESSED NATURAL MATERIALS BASKET *less than 30 lbs unless noted.*
18 Inch Maximum Dimension. Bark, willow, ash, vines, splint (not reeds). Mold woven not included.
- Class 31 BASKETRY, NATURAL MATERIALS COILED BASKET *18 Inch Maximum Dimension.*
Pine needles, sweet grass, leaves of iris, cattails, corn husks, rush, any other coiled natural materials.
- Class 32 BASKETRY, WAXED LINEN BASKET *18 Inch Maximum Dimension*
- Class 33 BASKETRY, SMALL BASKET *10 Inch Maximum Dimension*
- Class 34 BASKETRY, PINE NEEDLE BASKET *8 Inch Maximum Dimension*
- Class 35 BASKETRY, MINIATURE BASKET *5 Inch Maximum Dimension*
- Class 36 ANY HERITAGE CRAFT *36 Inch Maximum Dimension*
- Class 37 JEWELRY, STRUNG BEAD JEWELRY
- Class 38 JEWELRY, WOVEN BEADED JEWELRY
- Class 39 JEWELRY, WIREWORK JEWELRY
- Class 40 JEWELRY, METALSMITHING JEWELRY
- Class 41 JEWELRY, MIXED MEDIA JEWELRY
- Class 42 GOURDS, PAINTED GOURD *Paint only. No plastic gourds. Less than 24".*
- Class 43 GOURDS, CARVED GOURD *Can also be painted. No plastic gourds. Less than 24".*
- Class 44 GOURDS, EMBELLISHED GOURD *Can also be painted & carved. No plastic gourds.*
- Class 45 GOURDS, GOURD BIRDHOUSE *Any technique. No plastic gourds. Less than 24".*
- Class 46 SCRAPBOOKING, HERITAGE PAGE *Old pictures, family tree*
- Class 47 SCRAPBOOKING, BABY/KIDS PAGE
- Class 48 SCRAPBOOKING, TRAVEL/VACATION/HOLIDAY PAGE
- Class 49 SCRAPBOOKING, PETS PAGE
- Class 50 SCRAPBOOKING, TRIBUTE/MILITARY PAGE
- Class 51 PAPER CRAFT, HOLIDAY HAND MADE CARD
- Class 52 PAPER CRAFT, CREATIVE HAND CUT CARD *Embossed, crimped or folded by hand.*
- Class 53 PAPER CRAFT, HAND LETTERED CARD *Calligraphy*
- Class 54 ARTIST TRADING CARDS *Set of four, 2½ X 3½, securely displayed in one clear envelope.*
- Class 55 PAINTED ROCK - MANDALA *Repeated design. One pound or less.*
- Class 56 PAINTED ROCK - MESSAGE *Words in design. One pound or less.*
- Class 57 PAINTED ROCK - SINGLE COLOR *One color design. One pound or less.*
- Class 58 PAINTED ROCK - PLANT OR ANIMAL *Look like a plant or animal. One pound or less.*
- Class 59 LEGOS *Original design. Maximum 15" any direction. No guns or weapons.*
- Class 60 LEGOS *North Carolina themed design. Maximum 15" any direction. No guns or weapons.*
- Class 61 WREATHS *36 Inch Maximum Dimension.*
- Class 62 ORNAMENTS *Including Gourd Ornaments*
- Class 63 PAPIER MÂCHÉ *18 Inch Maximum Dimension*



Class 64 ORIGAMI AND QUILLING

Class 65 DECORATED FOOTWEAR *Shoe, boot, sandal, etc.*

Class 66 POLYMER CLAY *Sculpy, Bread Dough, Model Magic, etc.*

Class 67 GLASSWORK, KILN-FORMED *Any item. 24 Inch Maximum Dimension.*

Class 68 GLASSWORK, STAINED GLASS *Any item using lead or copper-fall weathered
36 Inch Maximum Dimension*

Class 69 GLASSWORK, FLAME WORKED, BLOWN GLASS *Any item. 24 Inch Maximum Dimension*

Class 70 MOSAIC *No paper, plastic or foam tiles. 24 Inch Maximum Dimension*

Class 71 MOSAIC, MIXED MEDIA *Pebbles, seashells, beach glass, etc. 24 Inch Maximum Dimension*

Class 72 DECORATED SEASHELLS, *1lb or less*

Class 73 BARN QUILT *36 Inch Maximum Dimension*

Class 75 Furniture Caning

*All entries must be less than
24" in any dimension and
less than 30 lbs unless noted.*

DIVISION 107 – GROUP HOME HANDICRAFTS 1st: \$10 2nd: \$8 3rd: \$6

Class 02 SCULPTURE, MIXED MEDIA SCULPTURE *Any technique. Not listed elsewhere.*

Class 04 HAND FORMED METAL CRAFT *Any metal. No jewelry*

Class 08 LEATHERWORKING *Any kit item*

Class 09 POTTERY, SLIP CAST CERAMICS *Glazed or stained*

Class 10 POTTERY, HAND FORMED POTTERY *Glazed or stained*

Class 11 POTTERY, WHEEL THROWN POTTERY *Glazed, stained, embellish*

Class 12 POTTERY, CLAY SCULPTURE *Fired clay, any subject*

Class 13 FABRIC PAINTING, STENCILED *Stenciled design. Must be ready to hang*

Class 14 FABRIC PAINTING, ORIGINAL *Original design. Must be ready to hang*

Class 15 STENCILING *Any surface except fabric, including mixed media*

Class 17 HOLIDAY DECORATION *Any holiday, includes mixed media. No ornaments.*

Class 18 WOODWORKING, HAND CARVED WOOD *Any item*

Class 22 WOODWORKING, WOODEN TOY *Original design*

Class 23 WOODWORKING, WOODEN TOY FROM KIT *Design from a pre-cut kit*

Class 24 WOODWORKING, CARVED WOOD WALKING STICK *Any technique. Any size.*

Class 25 WOODBURNING *Flat boards, decorated objects, etc.*

Class 33 BASKETRY, SMALL BASKET *10 Inch Maximum Dimension*

Class 34 BASKETRY, PINE NEEDLE BASKET *8 Inch Maximum Dimension*

Class 35 BASKETRY, MINIATURE BASKET *5 Inch Maximum Dimension*

Class 36 ANY HERITAGE CRAFT *36 Inch Maximum Dimension*

Class 37 JEWELRY, STRUNG BEAD JEWELRY

Class 38 JEWELRY, WOVEN BEADED JEWELRY

Class 41 JEWELRY, MIXED MEDIA JEWELRY

Class 42 GOURDS, PAINTED GOURD *Paint only. No plastic gourds. Less than 24".*

Class 45 GOURDS, GOURD BIRDHOUSE *Any technique. No plastic gourds. Less than 24".*

Class 46 SCRAPBOOKING, HERITAGE PAGE *Old pictures, family tree*

Class 47 SCRAPBOOKING, BABY/KIDS PAGE

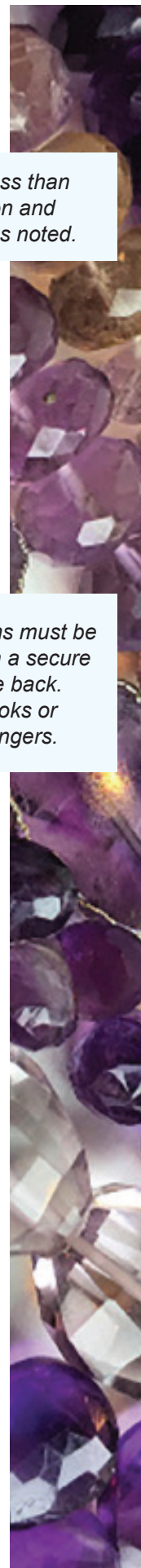
Class 48 SCRAPBOOKING, TRAVEL/VACATION/HOLIDAY PAGE

Class 49 SCRAPBOOKING, PETS PAGE

Class 50 SCRAPBOOKING, TRIBUTE/MILITARY PAGE

Class 51 PAPER CRAFT, HOLIDAY HAND MADE CARD

*Typically hung items must be
ready to hang with a secure
wire across the back.
No alligator hooks or
sawtoothed hangers.*



- Class 52 PAPERCRAFT, CREATIVE HAND CUT CARD *Embossed, crimped or folded by hand.*
- Class 53 PAPERCRAFT, HAND LETTERED CARD *Calligraphy*
- Class 55 PAINTED ROCK - MANDALA *Repeated design. One pound or less.*
- Class 56 PAINTED ROCK - MESSAGE *Words in design. One pound or less.*
- Class 57 PAINTED ROCK - SINGLE COLOR *One color design. One pound or less.*
- Class 58 PAINTED ROCK - PLANT OR ANIMAL *Look like a plant or animal. One pound or less.*
- Class 61 WREATHS *36 Inch Maximum Dimension.*
- Class 62 ORNAMENTS *Including Gourd Ornaments*
- Class 63 PAPIER MÂCHÉ *18 Inch Maximum Dimension*
- Class 64 ORIGAMI AND QUILLING
- Class 65 DECORATED FOOTWEAR *Shoe, boot, sandal, etc.*
- Class 66 POLYMER CLAY *Sculpy, Bread Dough, Model Magic, etc.*
- Class 70 MOSAIC *No paper, plastic or foam tiles. 24 Inch Maximum Dimension*
- Class 71 MOSAIC, MIXED MEDIA *Pebbles, seashells, beach glass, etc. 24 Inch Maximum Dimension*
- Class 72 DECORATED SEASHELLS, *1lb or less*
- Class 75 Furniture Caning

DIVISION 108 – DECORATED TABLES 1st: \$100 2nd: \$75 3rd: \$50 4th: \$25

Class 01 “DATE NIGHT AT HOME” TABLETOP SETTING

Judging Criteria: Creativity: 40 pts Overall Design: 40 pts Theme Conformance: 20 pts

The NC State Fair will furnish 3 foot round tables to be decorated according to the theme with a place setting for two. All decorations were the responsibility of the exhibitor. Exhibitors assume all liability. The fair and its staff are not responsible for any damage or loss.

Due to fire codes, no electric decorations are allowed. No lights or turning devices.

Exhibitors are chosen raffle style and will be notified by phone and email that they have a table to decorate.

DIVISION 100 – HAN SPECIAL AWARDS

CHAPEL HILL BASKETRY GUILD AWARD BASKETRY - PROFESSIONAL ADULT

Chapel Hill Basketry Guild will award \$25 to a piece demonstrating the mastery of basketry technique including complexity of design, workmanship and overall aesthetics used in weaving. \$25.00

CHAPEL HILL BASKETRY GUILD AWARD BASKETRY - AMATEUR ADULT

Chapel Hill Basketry Guild will award \$25 to a piece demonstrating the mastery of basketry technique including complexity of design, workmanship and overall aesthetics used in weaving. \$25.00

CHAPEL HILL BASKETRY GUILD AWARD BASKETRY - CHILD (6-12)

Chapel Hill Basketry Guild will award \$5 to a piece demonstrating the mastery of basketry technique including complexity of design, workmanship and overall aesthetics used in weaving. \$5.00

CHAPEL HILL BASKETRY GUILD AWARD BASKETRY - TEEN (13-17)

Chapel Hill Basketry Guild will award \$10 to a piece demonstrating the mastery of basketry technique including complexity of design, workmanship and overall aesthetics used in weaving. \$10.00

HAN BEST OF SHOW - ADULT PROFESSIONAL Division 101 \$25.00

HAN BEST OF SHOW - ADULT AMATEUR Division 102 \$25.00

HAN BEST OF SHOW - TEEN Division 103 \$25.00

HAN BEST OF SHOW - YOUTH & CHILD Divisions 104 & 105 \$25.00

HAN BEST OF SHOW - SPECIAL NEEDS Division 106 \$25.00

HAN BEST OF SHOW - GROUP HOME Division 107 \$25.00

