

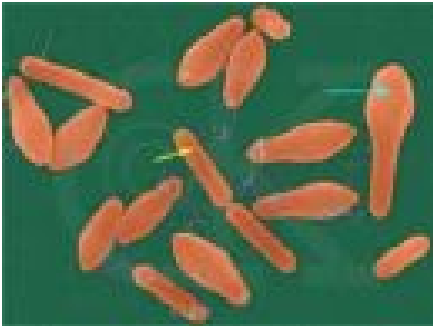


**Steve Troxler**  
Commissioner

**North Carolina Department of Agriculture  
and Consumer Services**  
*Food and Drug Protection Division*

**Joseph W. Reardon**  
Director

## **Alerta Sobre Botulismo**



La División de Alimentos y Medicinas del Departamento de Agricultura y Servicio al Consumidor de Carolina del Norte, alerta a la comunidad Hispana:

La compañía Castleberry´s Food fue notificada el pasado 18 de julio, 2007 por FDA sobre la necesidad de recolectar 10 de sus productos entre los que se encuentran varios productos de carne enlatada y de salsa de chili para perros calientes debido a que se presentaron dos casos confirmados de botulismo y dos casos por confirmar de botulismo entre los consumidores.

El Botulismo es una enfermedad producida por la bacteria *Clostridium botulinum* y en algunos casos puede resultar fatal. Los síntomas más comunes son: boca seca, dificultad para pasar alimentos, lengua trabada para hablar, mareo, doble visión, dificultad al respirar, problemas digestivos e incluso parálisis física.

El problema aparentemente se presentó por mal funcionamiento de ciertos equipos en una de las plantas y Castleberry´s Food, para mayor seguridad, voluntariamente ha sacado del mercado todos los productos provenientes de esa planta. Esto incluye ciertos lotes de comida para perros.

Aseguran tener ahora la situación bajo control.

Las personas que tengan en casa algunos de los siguientes productos para consumo humano o de animales deben eliminarlos o devolverlos:

### **Consumo Humano:**

- 12-pack of 15-ounce cans of "Austex Beef Stew."
- 15- and 19-ounce cans of "Austex Chili with Beans."
- 12-pack of 15-ounce cans of "Austex Chili No Beans."

- 12-pack of 19-ounce cans of "Austex Chili No Beans."
- 15-ounce cans of "Best Yet Chili with Beans."
- 15-ounce cans of "Best Yet Corned Beef Hash."
- 15-ounce cans of "Big Y Chili with Beans."
- 15-ounce cans of "Big Y Chili no Beans."
- 15-ounce cans of "Big Y Corned Beef Hash."
- 15-ounce cans of "Black Rock Chili with Beans."
- 24-pack of 10-ounce cans of "Bryan Hot Dog Chili Sauce."
- 24-pack of 15-ounce cans of "Bryan Corned Beef Hash."
- 24-pack of 10-ounce cans of "Bryan Chili No Beans."
- 24-pack of 15-ounce cans of "Bryan Chili No Beans."
- 24-pack of 15-ounce cans of "Bryan Chili with Beans."
- 10-ounce cans of "Bunker Hill Chili no Beans."
- 10-ounce cans of "Bunker Hill Chunky Chili no Beans."
- 10-ounce cans of "Castle Chili No Beans."
- 15-ounce cans of "Castleberry's Beef Stew."
- 15-ounce cans of "Castleberry's Brunswick Stew."
- 10-ounce cans of "Castleberry's BUNKER HILL, ORIGINAL Chili NO BEANS."
- 15-ounce cans of "Castleberry's CHILI WITH BEANS."
- 12-pack of 15-ounce cans of "Castleberry's Chili No Beans."
- 15-ounce cans of "Castleberry's Corned Beef Hash."
- 10-ounce cans of "Castleberry's HICKORY SMOKED, OVEN ROASTED, WITH SKINS, BARBECUE PORK IN BARBECUE SAUCE."
- 12-pack of 15-ounce cans of "Castleberry's Hot Chili with Beans."
- 10- and 14.5-ounce cans of "Castleberry's BBQ Pork."
- 10-ounce cans of "Castleberry's Sausage Gravy."
- 10-ounce cans of "Castleberry's Chip Beef Gravy."
- 15-ounce cans of "Cattle Drive Beef Stew."
- 15-ounce cans of "Cattle Drive Chili with Beans."
- 15-ounce cans of "Cattle Drive Chili no Beans."

- 15-ounce cans of "Cattle Drive CHILI WITH BEANS."
- 8-pack of 15-ounce cans of "Cattle Drive Chili with Beans."
- 15-ounce cans of "Cattle Drive Chicken Chili with Beans."
- 15-ounce cans of "Firefighter Chicken Chili."
- 15-ounce cans of "Firefighter Chicken Chili with Beans."
- 15-ounce cans of "Firefighter Chili with Beans."
- 15-ounce cans of "Firefighter Chili no Beans."
- 15-ounce cans of "Food Club Chili with Beans."
- 15-ounce cans of "Food Club Corned Beef Hash."
- 15-ounce cans of "Georgia Hash."
- 10- and 15-ounce cans of "Goldstar Chili."
- 15-ounce cans of "Goldstar Tex Mex Chili."
- 15-ounce cans of "Great Value Chili with Beans."
- 15-ounce cans of "Great Value Hot Chili with Beans."
- 15-ounce cans of "Kroger Beef Stew."
- 15-ounce cans of "Kroger Chili with Beans."
- 15-ounce cans of "Kroger Chili no Bean."
- 15-ounce cans of "Lowe's Chili no Bean."
- 15-ounce cans of "Lowe's Chili with Beans."
- 15-ounce cans of "Lowe's Corn Beef Hash."
- 15-ounce cans of "Meijer Chili with Beans."
- 15-ounce cans of "Meijer Chili no Beans."
- 15-ounce cans of "Meijer CORNED BEEF HASH."
- 12-pack of 15-ounce cans of "Morton House Chili with Beans."
- 15-ounce cans of "Morton House *Corned Beef Hash*."
- 10- and 15-ounce cans of "Paramount Hot Dog Chili Sauce."
- 15-ounce cans of "Paramount Chili no Bean."
- 15-ounce cans of "Paramount Chili with Beans."
- 15-ounce cans of "Piggly Wiggly Chili with Beans."
- 10- and 15-ounce cans of "Piggly Wiggly Chili no Bean."

- 15-ounce cans of "Piggly Wiggly Corned Beef Hash."
- 12-pack of 15-ounce cans of "Prudence Corned Beef Hash."
- 15-ounce cans of "Southern Home Chili with Beans."
- 10- and 15-ounce cans of "Southern Home Chili no Bean."
- 15-ounce cans of "Southern Home Corned Beef Hash."
- 10-ounce cans of "Steak N Shake Chili."
- 15-ounce cans of "Thrifty Maid Chili with Beans."
- 15-ounce cans of "Thrifty Maid Corned Beef Hash."
- 15-ounce cans of "Triple Bar Chili with Beans."
- 12-pack of 15-ounce cans of "Triple Bar Chili with Beans."
- 15-ounce cans of "Triple Bar Chili no Beans."
- 12-pack of 15-ounce cans of "Triple Bar Chili no Beans."
- 15-ounce cans of "Value Time Chili with Beans."

**Comida para Perros:**

- Irish Stew with Beef Dog Food 15oz UPC # 23633-59860
- Chinese Take Out with Sauce with Vegetables and Chicken Dog Food 15oz  
UPC # 23633-59861
- Southern Sytle Dumplings with Gravy with Chicken and Vegetables 15oz  
UPC 2633-59862
- Hobo Chili with Chicken Pasta Dog Food 15oz UPC# 23633-59863

**Para mayor información comuníquese con la División de Alimentos y Medicinas del Departamento de Agricultura de Carolina del Norte: 919 – 733- 7366**