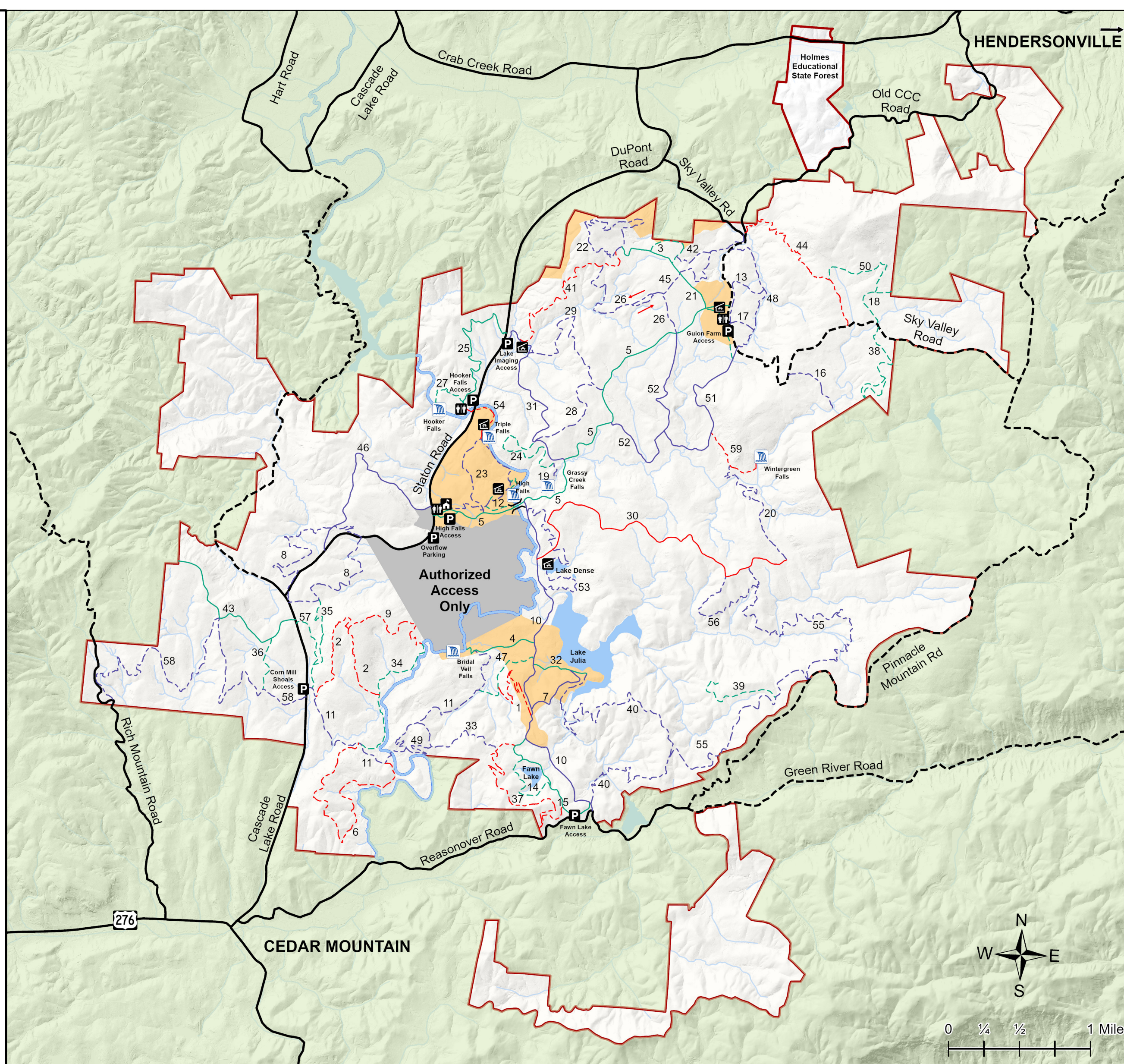


DuPont State Recreational Forest

- Access Areas
- Covered Bridge
- Hunting Safety Zone
- Little River
- Picnic Shelter
- Property Boundary
- Restrooms
- Road - Easy
- Road - Moderate
- Road - Difficult
- State Road, Gravel
- State Road, Paved
- Trail - Easy
- Trail - Moderate
- Trail - Difficult
- Visitor Center
- Waterfalls



Produced by NCFS
Updated May 2025



- ### Foot Traffic Only
- Number, Name, Miles
- 19, Grassy Creek Falls Trail, 0.1
 - 27, Hooker Falls Trail, 0.4
 - 54, Triple Falls Trail, 0.4
- ### Multiuse Trails
- Number, Name, Miles
- 1, Airstrip Trail, 1
 - 2, Big Rock Trail, 0.9
 - 3, Boundary Trail, 0.4
 - 4, Bridal Veil Falls Road, 0.6
 - 5, Buck Forest Road, 3.2
 - 6, Burnt Mountain Trail, 2.2
 - 7, Camp Summit Road, 0.6
 - 8, Cascade Loop, 3.1
 - 9, Cedar Rock Trail, 1.5
 - 10, Conservation Road, 2.6
 - 11, Corn Mill Shoals Trail, 2.7
 - 12, Covered Bridge Trail, 0.2
 - 13, Farmhouse Trail, 0.6
 - 14, Fawn Lake Loop, 0.6
 - 15, Fawn Lake Road, 1
 - 16, Flat Rock Trail, 0.5
 - 17, Flatwoods Trail, 0.2
 - 18, Frank Street, 0.4
 - 20, Grassy Creek Trail, 1.3
 - 21, Hickory Mountain Road, 0.9
 - 22, Hickory Mountain Trail, 1.6
 - 23, High Falls Loop, 1.7
 - 24, Hilltop Trail, 1
 - 25, Holly Road, 1.3
 - 26, Hooker Creek Trail, 1.6
 - 28, Isaac Heath Trail, 0.8
 - 29, Jim Branch Trail, 1.3
 - 30, Joanna Road, 2.6
 - 31, Lake Imaging Road, 1.5
 - 32, Lake Julia Road, 0.4
 - 33, Laurel Ridge Trail, 0.9
 - 34, Little River Trail, 1.1
 - 35, Longside Trail, 0.8
 - 36, Micajah Trail, 0.4
 - 37, Mine Mountain Trail, 1.9
 - 38, Plantation Trail, 1.2
 - 39, Poplar Hill Trail, 0.7
 - 40, Reasonover Creek Trail, 3.5
 - 41, Ridgeline Trail, 1.4
 - 42, Rifle Trail, 0.3
 - 43, Rock Quarry Road, 1.3
 - 44, Rocky Ridge Trail, 1.5
 - 45, Ruffed Grouse Trail, 1
 - 46, Sheep Mountain Road, 1.5
 - 47, Shelter Rock Trail, 0.6
 - 48, Shoal Creek Trail, 1
 - 49, Shoals Trail, 0.4
 - 50, Switchback Trail, 0.8
 - 51, Tarklin Branch Road, 1.4
 - 52, Thomas Cemetery Road, 1.8
 - 53, Three Lakes Trail, 1.8
 - 55, Turkey Knob Trail, 4.5
 - 56, Twin Oaks Trail, 0.9
 - 57, Twixt Trail, 0.4
 - 58, Wilkie Trail, 3.7
 - 59, Wintergreen Falls Trail, 0.5

