



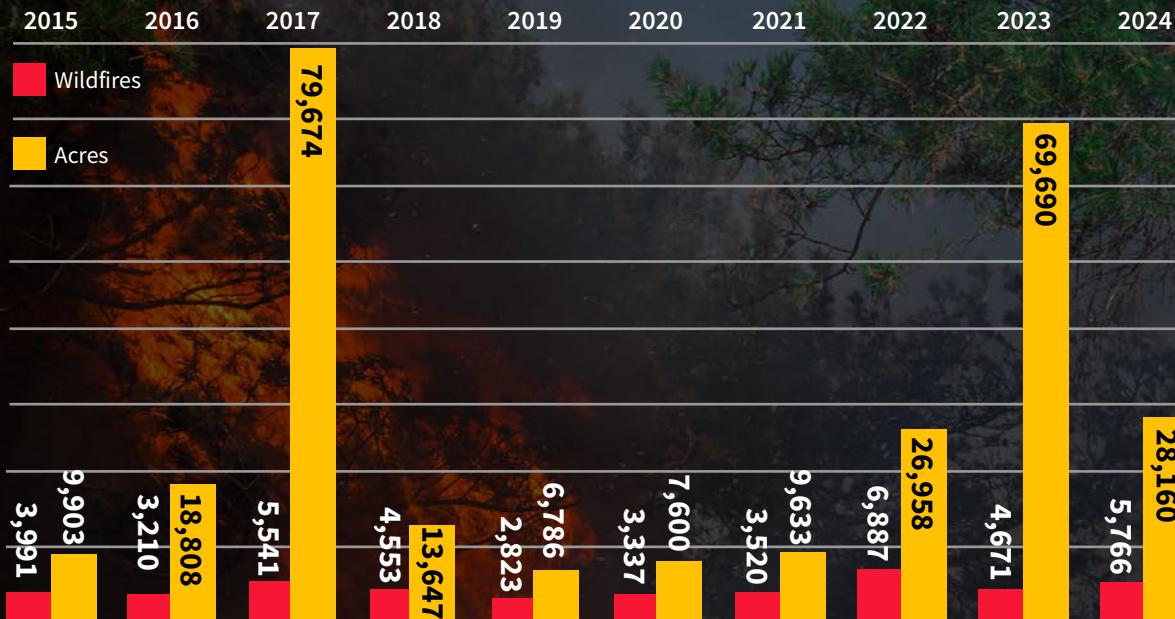
*Protect  
North Carolina's  
Forests*

# BURN DEBRIS SAFELY

2 0 2 6 C A L E N D A R



## Number of Wildfires and Acres Burned

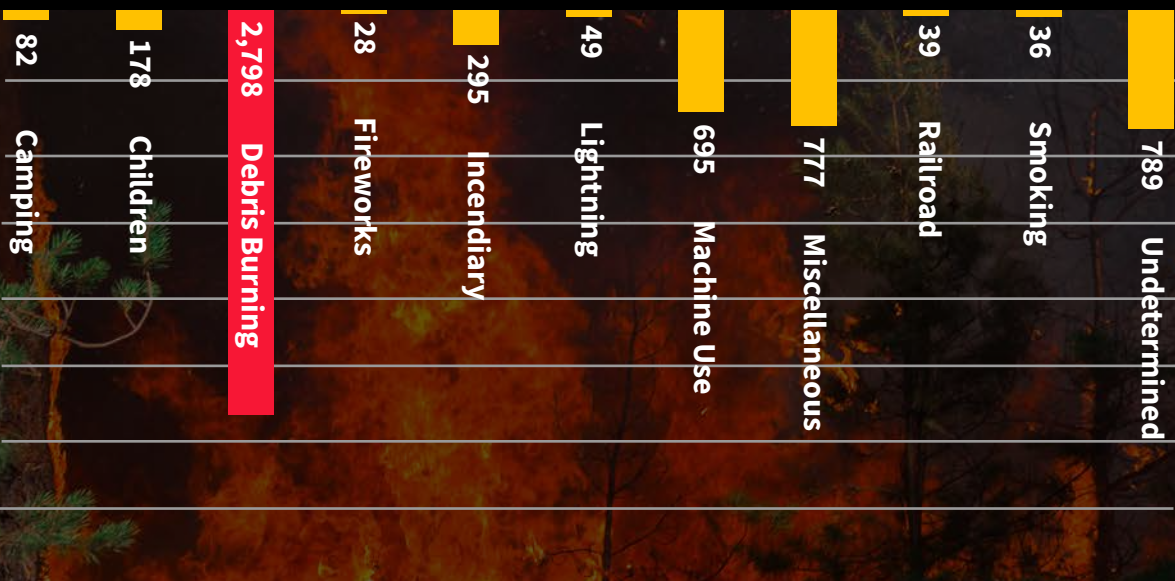


## Wildfire in North Carolina

The overwhelming majority of fires in North Carolina are caused by humans.

On average, roughly 46% of wildfires are a direct result of careless debris burning. Lightning, or natural fires, only account for about 1% of wildfires each year.

**46%** of wildfires are caused by careless debris burning



## Wildfires by Cause in State Fiscal Year 2024

Over the last ten years, North Carolina has averaged 4,430 wildfires and 27,086 acres burned by those fires annually. Historically, wildfire seasons occur in the spring months, late February to early May, and in the autumn months of October and November.

# JANUARY 2026

SUNDAY

MONDAY

TUESDAY

WEDNESDAY

THURSDAY

FRIDAY

SATURDAY

DECEMBER 2025  
SU MO TU WE TH FR SA  
1 2 3 4 5 6  
7 8 9 10 11 12 13  
14 15 16 17 18 19 20  
21 22 23 24 25 26 27  
28 29 30 31

FEBRUARY 2026  
SU MO TU WE TH FR SA  
1 2 3 4 5 6 7  
8 9 10 11 12 13 14  
15 16 17 18 19 20 21  
22 23 24 25 26 27 28

1  
  
New Year's Day

2

3

4

5

6

7

8

9

10

11

12

13

14

15

16

17

18

19  
Martin Luther King, Jr.  
Day

20

21

22

23

24

25

26

27

28

29

30

31

To learn more about North Carolina's forests and how to protect them, visit:

**WWW.NCFORESTSERVICE.GOV**

The graphics above are representative of wildfire data in North Carolina. The top graph illustrates the number of wildfires and acres burned annually over the last 10 years. The bottom graph illustrates wildfires by cause during state fiscal year 2023-24.



The N.C. Forest Service is a division of the  
N.C. Department of Agriculture and Consumer  
Services. | Steve Troxler, Commissioner





## Prescribed fire is good fire.

February is Prescribed Fire Awareness Month.

Prescribed fire is the carefully planned use of low-intensity fire under predetermined weather and fuel parameters to obtain specific management objectives. Prescribed fire is a low-cost and effective forest management tool to help our forestland thrive and remain healthy.

The N.C. Forest Service offers a certified burner training program for landowners to learn how to responsibly conduct prescribed burns.

Learn more about prescribed fire and the certified burner program at [www.ncforestservice.gov/goodfire](http://www.ncforestservice.gov/goodfire).



# FEBRUARY 2026

SUNDAY	MONDAY	TUESDAY	WEDNESDAY	THURSDAY	FRIDAY	SATURDAY
1  Prescribed Fire Awareness Month	2	3	4	5	6	7
8	9	10	11	12	13	14
15	16	17	18	19	20	21
22	23  National Invasive Species Awareness Week	24	25	26	27  Battle of Moores Creek Bridge	28

JANUARY 2026

SU	MO	TU	WE	TH	FR	SA
				1	2	3
4	5	6	7	8	9	10
11	12	13	14	15	16	17
18	19	20	21	22	23	24
25	26	27	28	29	30	31

MARCH 2026

SU	MO	TU	WE	TH	FR	SA
1	2	3	4	5	6	7
8	9	10	11	12	13	14
15	16	17	18	19	20	21
22	23	24	25	26	27	28
29	30	31				

To learn more about North Carolina's certified burner program, visit:

**WWW.NCFORESTSERVICE.GOV**

Photos above: The photo on the left shows N.C. Forest Service personnel monitoring a prescribed burn as it is carried out. The photo on the right demonstrates the regrowth and green-up that occur within months of prescribed fire application.



The N.C. Forest Service is a division of the N.C. Department of Agriculture and Consumer Services. | Steve Troxler, Commissioner



# Careful burners watch the weather.

Never burn on dry or windy days. Burners should check weather conditions for the area they plan to burn, even for the days after the burn. Property owners can use resources and professional guidance from the N.C. Forest Service as well as the State Climate Office and the National Weather Service. The N.C. Forest Service has partnered with the State Climate Office to provide a “one-stop” shop for weather information. The Fire Weather Intelligence Portal is a public resource available to all landowners and burners.

## Fire Weather Intelligence Portal

By the  North Carolina State Climate Office

Time Period:

Past Conditions

HIDE TOOL OPTIONS

EXPAND ALL MENUS

COLLAPSE ALL MENUS

### Map Details

☒ Use my current location and zoom level

[Detect my location](#)

☒ Show on map

☐ Zoom to a state

☐ Zoom to a county

Map background: ☒ Terrain ☐ Street map

☐ County boundaries

☐ Fire Danger Rtg. Areas

☐ River basins

☐ Forestry service regions

☐ Latitude/longitude lines

☐ Forest service districts


### Observation Time


View data from today (Aug 11) at 12 pm


ET

☒ Always show the latest observation

### Hazards

☐  Daily Average PM2.5 Concentration

☐  Current Wildland Fire Perimeters

☐  Current Watches and Warnings

### Weather Station Data

☒ View data for each weather station

Select up to 4 datasets to display from these categories:

 Station Information

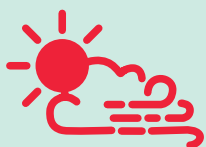


DAY



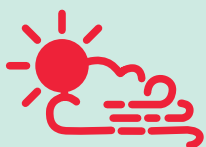
WINDY

MONDAY



DRY/WINDY

TUESDAY



DRY/WINDY

WEDNESDAY



DRY/WINDY

THURSDAY



CLOUDY

FRIDAY



PARTLY SUNNY

SATURDAY



DRY/WINDY

SUNDAY



CLOUDY

MONDAY



CLOUDY

TUESDAY



PARTLY SUNNY



# MARCH 2026

SUNDAY	MONDAY	TUESDAY	WEDNESDAY	THURSDAY	FRIDAY	SATURDAY
1	2	3	4	5	6	7
8  Daylight Saving Time begins	9	10	11	12	13	14
15	16	17  National Ag Day	18	19	20  First Day of Spring North Carolina Arbor Day	21  International Day of Forests
22  World Water Day	23	24	25	26	27	28
29	30	31	FEBRUARY 2026 SU MO TU WE TH FR SA 1 2 3 4 5 6 7 8 9 10 11 12 13 14 15 16 17 18 19 20 21 22 23 24 25 26 27 28		APRIL 2026 SU MO TU WE TH FR SA 1 2 3 4 5 6 7 8 9 10 11 12 13 14 15 16 17 18 19 20 21 22 23 24 25 26 27 28 29 30	

To learn more about fire weather and current conditions in your area, visit:

**WWW.NCFORESTSERVICE.GOV**

The large photo above highlights the Fire Weather Intelligence Portal as an online resource for landowners. The smaller inset weather icons serve as a reminder to monitor weather conditions over an extended period to ensure safe burning.



The N.C. Forest Service is a division of the N.C. Department of Agriculture and Consumer Services. | Steve Troxler, Commissioner



## Responsible burners know what is required.

The N.C. Forest Service issues more than 250,000 open burning permits each year. Burning permits are required for most outdoor fires.

Permits are available free of charge from the N.C. Forest Service or one of its authorized permitting agents. N.C. Forest Service permits are not required when burning within 100 feet of your home, however burners should check with your local county ranger or county fire marshal concerning local requirements or restrictions that may apply in your area.

Having a valid permit does not relieve the permittee of compliance with federal, state and local laws or regulations as well as any damage that may be caused by their fire.

STATE OF NORTH CAROLINA  
North Carolina Forest Service

REGULAR OPEN BURNING PERMIT  
NON-HIGH HAZARD

Under the provisions of and in accordance with the North Carolina Forest Service Rules and Regulations, I, \_\_\_\_\_

M \_\_\_\_\_

Is authorized to start, or cause to be started, a fire on \_\_\_\_\_

Approximately \_\_\_\_\_ mile(s) and \_\_\_\_\_

of \_\_\_\_\_

Type of burning:

☐ Ground Clearing Debris

☐ Other Permitted Vegetative Matter

☐ Woodlands

If your fire becomes dangerous, you must immediately call the fire department.

N.C. Forest Service Permit No. \_\_\_\_\_

INSTRUCTIONS TO PERMITTEE: This permit does not authorize the permittee to burn any material that is prohibited by law, or to burn any material in a manner that is dangerous to life or property, or to burn any material in a manner that is a nuisance to the community.

1. His/Her responsibility for complying with all state laws (such as the North Carolina "Control and Prohibition of Open Burning" Act, Chapter 113, Article 1, Section 2D.1901, which prohibits the open burning of any material that is dangerous to life or property, or to burn any material in a manner that is a nuisance to the community).
2. His/Her responsibility for complying with all local laws, ordinances, and regulations, including those of the county fire marshal or county ranger.
3. His/Her responsibility for any damage caused by the fire, and for the cost of any cleanup or removal of the fire.

Note: The proper time to burn is when the weather is dry, the wind is light, and the leaves are mature.

Attention: Many counties have their own burning regulations. It is the permittee's responsibility to understand the air pollution regulations on the back of this permit.

As permittee, I certify: I understand the regulations on the back of this permit, and I agree to follow them. I understand the air pollution regulations on the back of this permit.

Pursuant to N.C. S. 106-948, the permittee is responsible for the cost of any damage caused by the fire, and for the cost of any cleanup or removal of the fire.

215-1148 of the permittee is responsible for the cost of any damage caused by the fire, and for the cost of any cleanup or removal of the fire.

SEE THE BACK OF THIS PERMIT FOR THE AIR POLLUTION REGULATIONS.

Telephone No. \_\_\_\_\_





# APRIL 2026

SUNDAY	MONDAY	TUESDAY	WEDNESDAY	THURSDAY	FRIDAY	SATURDAY
	MARCH 2026 SU MO TU WE TH FR SA 1 2 3 4 5 6 7 8 9 10 11 12 13 14 15 16 17 18 19 20 21 22 23 24 25 26 27 28 29 30 31	MAY 2026 SU MO TU WE TH FR SA 1 2 3 4 5 6 7 8 9 10 11 12 13 14 15 16 17 18 19 20 21 22 23 24 25 26 27 28 29 30 31	1       Invasive Plant Pest and Disease Awareness Month	2	3       Good Friday	4
5	6	7	8	9	10	11
12       The Halifax Resolves	13	14	15	16	17	18
19	20	21	22       Earth Day	23	24       National Arbor Day	25
26	27	28	29	30		

To learn more about North Carolina's open burning permit requirements or to obtain an online permit, visit:

**WWW.NCFORESTSERVICE.GOV**



The N.C. Forest Service is a division of the N.C. Department of Agriculture and Consumer Services. | Steve Troxler, Commissioner

*Photos above: The large photo above features a written burn permit available at no cost from any N.C. Forest Service office or authorized permitting agent location as pictured in the inset photo.*



## Responsible burners only burn natural vegetation.

While debris burning can be a useful tool for landowners, burning trash or other manmade material is illegal and is not allowed under a N.C. Forest Service burn permit. These materials can release toxic chemicals into the air, soil and water. Household trash, construction debris and other manmade material should be properly disposed of.

For more information on proper disposal, contact your local or county waste management officials.





# MAY 2026

SUNDAY

MONDAY

TUESDAY

WEDNESDAY

THURSDAY

FRIDAY

SATURDAY

			APRIL 2026 <small>SU MO TU WE TH FR SA</small> 1 2 3 4 5 6 7 8 9 10 11 12 13 14 15 16 17 18 19 20 21 22 23 24 25 26 27 28 29 30	JUNE 2026 <small>SU MO TU WE TH FR SA</small> 1 2 3 4 5 6 7 8 9 10 11 12 13 14 15 16 17 18 19 20 21 22 23 24 25 26 27 28 29 30	1       National Wildfire Awareness Month	2       National Fallen Firefighters Memorial Weekend
3	4	5	6	7	8	9
10	11	12	13	14	15	16    National Love a Tree Day
17	18	19	20	21	22	23
24	25	26	27   The Halifax Resolves presented to Continental Congress	28	29	30
31  Memorial Day						

To learn more about North Carolina's open burning regulations, visit:

**WWW.NCFORESTSERVICE.GOV**

Photos above: The larger image demonstrates an appropriate debris pile containing only vegetative material. The inset photos provide "what not to burn" examples such as household trash and aerosol cans.



The N.C. Forest Service is a division of the N.C. Department of Agriculture and Consumer Services. | Steve Troxler, Commissioner



# Extra care should be taken when burning on organic soils.

North Carolina has unique natural and agricultural areas with soils made up of partially decayed organic matter. Fires in these areas not only burn across the ground but can spread beneath the soil's top layer only to resurface days or weeks later.

More preparation and planning should be taken when burning in these areas.

Pocosins and Carolina Bays have organic soils that can ignite and burn for extended periods of time causing consumption of soils and production of dense acrid smoke. These areas also have volatile live "green" fuels that burn actively during this time of year and can contribute to large wildfire growth.

## High Hazard Counties





# JUNE 2026

SUNDAY	MONDAY	TUESDAY	WEDNESDAY	THURSDAY	FRIDAY	SATURDAY
<p>MAY 2026</p> <p>SU MO TU WE TH FR SA</p> <p>1 2</p> <p>3 4 5 6 7 8 9</p> <p>10 11 12 13 14 15 16</p> <p>17 18 19 20 21 22 23</p> <p>24 25 26 27 28 29 30</p> <p>31</p>	<p>1</p> <p>National Great Outdoors Month</p>	<p>2</p>	<p>3</p>	<p>4</p>	<p>5</p>	<p>6</p> <p>National Trails Day</p>
<p>7</p>	<p>8</p>	<p>9</p>	<p>10</p>	<p>11</p>	<p>12</p>	<p>13</p> <p>National Get Outdoors Day</p>
<p>14</p> <p>Flag Day</p>	<p>15</p>	<p>16</p>	<p>17</p>	<p>18</p>	<p>19</p>	<p>20</p>
<p>21</p> <p>First Day of Summer</p>	<p>22</p>	<p>23</p>	<p>24</p>	<p>25</p>	<p>26</p>	<p>27</p>
<p>28</p>	<p>29</p>	<p>30</p>	<p>JULY 2026</p> <p>SU MO TU WE TH FR SA</p> <p>1 2 3 4</p> <p>5 6 7 8 9 10 11</p> <p>12 13 14 15 16 17 18</p> <p>19 20 21 22 23 24 25</p> <p>26 27 28 29 30 31</p>			

To learn more about burning responsibly, visit:


**WWW.NCFORESTSERVICE.GOV**

Photos above: The larger photo is of the Pulp Road Fire that burned nearly 16,000 acres in Brunswick County in June 2023. Brunswick County is a high hazard county. The small inset graphic illustrates all high hazard counties in North Carolina. The small inset photo is of an exposed taproot that had the organics burned away from it in the Evans Road Fire, which burned more than 41,000 acres over a three-month period in 2008.



The N.C. Forest Service is a division of the N.C. Department of Agriculture and Consumer Services. | Steve Troxler, Commissioner



A photograph of an elderly man in a light blue shirt, khaki pants, and a dark baseball cap, seen from behind, using a long-handled tool to manage a large pile of burning debris in a yard. In the background, there is a weathered wooden barn with a red roof. The scene is set during the day with some clouds in the sky.

## Don't turn your back on your burn pile.

A fire can escape in a matter of seconds.

North Carolina's open burning laws require a person burning any material that may endanger or destroy the property of another to keep and maintain a careful watchman in charge of the burning until the fire is extinguished. This means you should never leave a fire unattended until it is out cold.

Nearly half of all wildfires in North Carolina are the result of careless backyard debris burning.



# JULY 2026

SUNDAY	MONDAY	TUESDAY	WEDNESDAY	THURSDAY	FRIDAY	SATURDAY
		JUNE 2026 SU MO TU WE TH FR SA 1  2  3  4  5  6 7  8  9 10 11 12 13 14 15 16 17 18 19 20 21 22 23 24 25 26 27 28 29 30	1    NCFS Seedling Store opens	2	3	4    Independence Day
5	6	7	8	9	10	11
12	13	14	15	16	17	18
19	20	21	22	23	24	25
26	27	28	29	30	31	AUGUST 2026 SU MO TU WE TH FR SA 1 2  3  4  5  6  7  8 9 10 11 12 13 14 15 16 17 18 19 20 21 22 23 24 25 26 27 28 29 30 31

To learn more about burning responsibly, visit:

**WWW.NCFORSTSERVICE.GOV**

Photo above: A landowner maintains watch over his fire, demonstrating the imperative best practice of never turning your back on your fire or leaving it unattended.



The N.C. Forest Service is a division of the N.C. Department of Agriculture and Consumer Services. | Steve Troxler, Commissioner





Tall pile = Intense burning



## Remember “smaller not taller” when burning your debris.

When burning debris, overloading a burn pile can lead to intense burning that isn't easy to control. Preventing the spread of embers into areas that were not intended to burn becomes difficult.

Tall piles are more susceptible to winds that can complicate your burning. Smaller piles can take less time and effort to burn thoroughly, giving you more peace of mind to ensure a burn pile is fully extinguished and out cold.



Small pile = Peace of mind



# AUGUST 2026

SUNDAY

MONDAY

TUESDAY

WEDNESDAY

THURSDAY

FRIDAY

SATURDAY

				<div>JULY 2026</div> <div>SU MO TU WE TH FR SA</div> <div>1 2 3 4</div> <div>5 6 7 8 9 10 11</div> <div>12 13 14 15 16 17 18</div> <div>19 20 21 22 23 24 25</div> <div>26 27 28 29 30 31</div>							<div>SEPTEMBER 2026</div> <div>SU MO TU WE TH FR SA</div> <div>1 2 3 4 5</div> <div>6 7 8 9 10 11 12</div> <div>13 14 15 16 17 18 19</div> <div>20 21 22 23 24 25 26</div> <div>27 28 29 30</div>							1													
2	3	4	5	6	7	8	9	10	11	12	13	14	15	16	17	18	19	20	21	22	23	24	25	26	27	28	29	30	31		
2	3	4	5	6	7	8	9	10	11	12	13	14	15	16	17	18	19	20	21	22	23	24	25	26	27	28	29	30	31		
9	10	11	12	13	14	15	16	17	18	19	20	21	22	23	24	25	26	27	28	29	30	31	1	2	3	4	5	6	7	8	
Smokey Bear's 82 <sup>nd</sup> Birthday				9	10	11	12	13	14	15	16	17	18	19	20	21	22	23	24	25	26	27	28	29	30	31	1	2	3	4	5
16	17	18	19	20	21	22	23	24	25	26	27	28	29	30	31	1	2	3	4	5	6	7	8	9	10	11	12	13	14	15	16
23	24	25	26	27	28	29	30	31	1	2	3	4	5	6	7	8	9	10	11	12	13	14	15	16	17	18	19	20	21	22	23
30	31	1	2	3	4	5	6	7	8	9	10	11	12	13	14	15	16	17	18	19	20	21	22	23	24	25	26	27	28	29	30

To learn more about burning responsibly, visit:

**WWW.NCFORESTSERVICE.GOV**

Photos above: The photo on the left demonstrates a burn pile that is too tall, resulting in intense burning. The photo on the right demonstrates a small pile that would be easier to control and extinguish properly.



The N.C. Forest Service is a division of the  
N.C. Department of Agriculture and Consumer  
Services. | Steve Troxler, Commissioner



# A prepared burner is a responsible burner.

Burning yard debris is a serious commitment. Make sure you have the necessary tools in place before lighting your fire. You may not have time to find what you need after the burning begins.

Take your time, but be prepared to stay with your fire the entire time it burns. Many burns escape long after the flames are extinguished.

Set reminders to check your extinguished pile later in the evening and the next day, especially if your local weather forecast predicts dry or windy conditions.



Set reminders to check your extinguished pile.





# SEPTEMBER 2026

SUNDAY	MONDAY	TUESDAY	WEDNESDAY	THURSDAY	FRIDAY	SATURDAY
	<div><div>AUGUST 2026</div><div><div>SU</div><div>MO</div><div>TU</div><div>WE</div><div>TH</div><div>FR</div><div>SA</div></div><div><div>1</div><div>2</div><div>3</div><div>4</div><div>5</div><div>6</div><div>7</div><div>8</div><div>9</div><div>10</div><div>11</div><div>12</div><div>13</div><div>14</div><div>15</div><div>16</div><div>17</div><div>18</div><div>19</div><div>20</div><div>21</div><div>22</div><div>23</div><div>24</div><div>25</div><div>26</div><div>27</div><div>28</div><div>29</div><div>30</div><div>31</div></div></div>	1	2	3	4	5
6	7 <div>Labor Day</div>	8	9	10	11 <div>Mountain State Fair begins</div>	12
13	14	15	16	17	18	19
20 <div>Mountain State Fair ends</div>	21	22	23 <div>First Day of Autumn</div>	24	25	26 <div>National Public Lands Day</div>
27	28	29	30	<div><div>OCTOBER 2026</div><div><div>SU</div><div>MO</div><div>TU</div><div>WE</div><div>TH</div><div>FR</div><div>SA</div></div><div><div>1</div><div>2</div><div>3</div><div>4</div><div>5</div><div>6</div><div>7</div><div>8</div><div>9</div><div>10</div><div>11</div><div>12</div><div>13</div><div>14</div><div>15</div><div>16</div><div>17</div><div>18</div><div>19</div><div>20</div><div>21</div><div>22</div><div>23</div><div>24</div><div>25</div><div>26</div><div>27</div><div>28</div><div>29</div><div>30</div><div>31</div></div></div>		

To learn more about burning responsibly, visit:

**WWW.NCFORESTSERVICE.GOV**

The inset photos above demonstrate appropriate tools, such as a shovel, rake, water source and phone, that you should have nearby before lighting an outdoor fire.



The N.C. Forest Service is a division of the N.C. Department of Agriculture and Consumer Services. | Steve Troxler, Commissioner





## Burning Your Leaves: a North Carolina Tradition

Burning leaves can be an effective and affordable method of maintaining your property.

Before burning leaves, make sure you have chosen a good day to burn. Choose a day with low windspeeds and when you have enough time to finish the job completely.

Burning leaves can appear to be a quick process, but make sure you check residual debris after burning to ensure it has 'gone cold.' Many wildfires ignite because landowners assume a pile of burned leaves is fully extinguished when it is not.



# OCTOBER 2026

SUNDAY

MONDAY

TUESDAY

WEDNESDAY

THURSDAY

FRIDAY

SATURDAY

SEPTEMBER 2026  
SU MO TU WE TH FR SA  
1 2 3 4 5  
6 7 8 9 10 11 12  
13 14 15 16 17 18 19  
20 21 22 23 24 25 26  
27 28 29 30

NOVEMBER 2026  
SU MO TU WE TH FR SA  
1 2 3 4 5 6 7  
8 9 10 11 12 13 14  
15 16 17 18 19 20 21  
22 23 24 25 26 27 28  
29 30

1  
  
Firewood Month

2

3

4

5

6

7

8

9

10

11

12

13

14

15  
  
N.C. State Fair begins

16

17

18  
  
National Forest Products  
Week begins

19

20

21

22

23

24

25  
  
N.C. State Fair ends

26

27

28

29

30

31

To learn more about burning responsibly, visit:

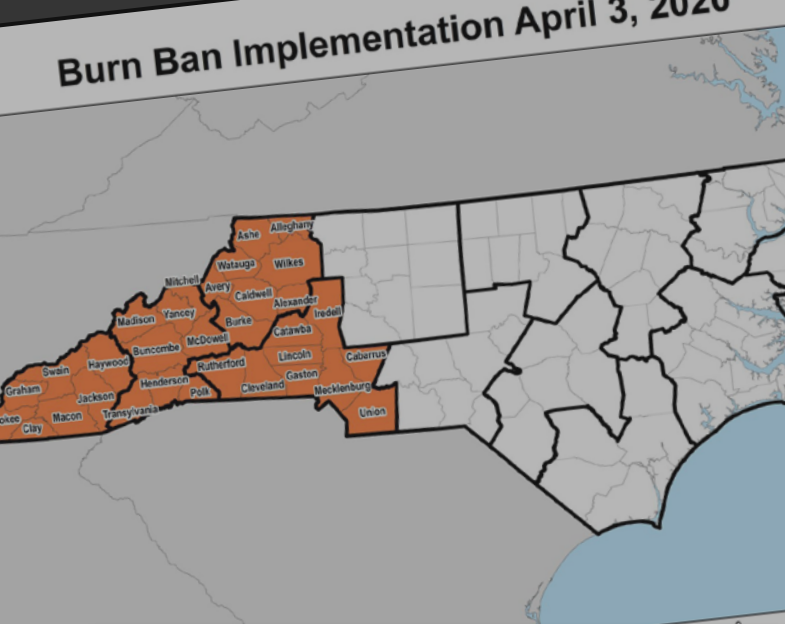
**WWW.NCFORESTSERVICE.GOV**

The photo above, which depicts a pile of burning leaves, is a typical example of the type of yard debris burns commonly conducted by North Carolina landowners during the fall months.



The N.C. Forest Service is a division of the  
N.C. Department of Agriculture and Consumer  
Services. | Steve Troxler, Commissioner





# Responsible burners stay informed about burning restrictions.

## N.C. Forest Service's post



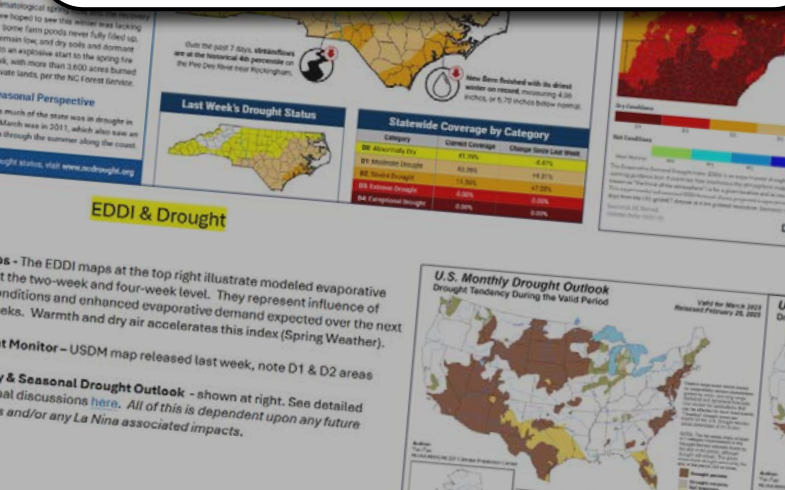
As of March 31, 2025, the statewide ban on open burning remains in effect for all 100 counties. Before you ask, that means **NO OUTDOOR BURNING** of any kind, anywhere in this state until further notice.

## STATEWIDE BURN BAN REMAINS IN EFFECT

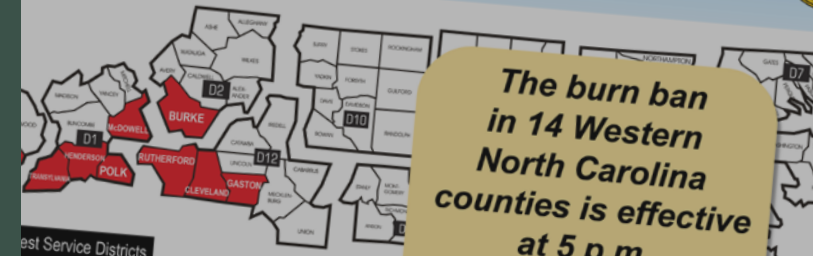
NO OUTDOOR BURNING UNTIL FURTHER NOTICE



Comment as N.C. Forest Service



## Burn Ban Effective Nov. 5 at 5 p.m.



The burn ban in 14 Western North Carolina counties is effective at 5 p.m., Nov. 5, 2023.

View full details at [www.ncforestservice.gov](http://www.ncforestservice.gov).

## N.C. Forest Service's post

Forest Service

Due to increased fire risk, the N.C. Forest Service has issued a second ban on all open burning and has burning permits for 16 additional counties in Western North Carolina. The affected counties are Burke, Cherokee, Clay, Cleveland, Gaston, Graham, Henderson, Jackson, Macon, Polk, Rutherford, Swain and Transylvania. The burn ban becomes effective at 5 p.m., Nov. 8. It will remain in place until further notice.

Please see: <https://bit.ly/3MC1ApX>



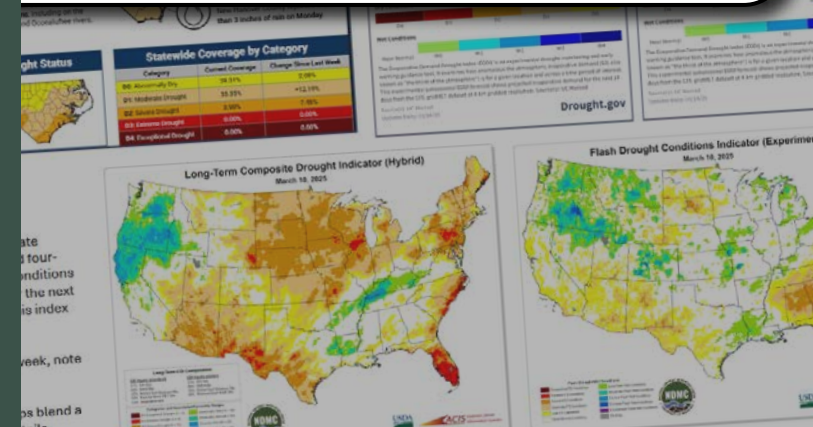
Comment as N.C. Forest Service

The Commissioner of Agriculture has the authority to restrict debris burning during prolonged periods of hazardous forest fire conditions.

When there is a state-issued burn ban, burn permits are canceled, and no new burn permits are issued.

Individuals who burn during a burn ban can be charged with a misdemeanor, which carries fines and court costs.

For the most accurate and up-to-date information about state-issued burn bans, visit [www.ncforestservice.gov](http://www.ncforestservice.gov).





# NOVEMBER 2026

SUNDAY	MONDAY	TUESDAY	WEDNESDAY	THURSDAY	FRIDAY	SATURDAY
1  Daylight Saving Time ends	2	3	4	5	6	7
8	9	10	11  Veterans Day	12	13	14
15	16	17  National Take a Hike Day	18	19	20	21
22	23	24	25	26  Thanksgiving	27	28
29	30	OCTOBER 2026 SU MO TU WE TH FR SA 1 2 3 4 5 6 7 8 9 10 11 12 13 14 15 16 17 18 19 20 21 22 23 24 25 26 27 28 29 30 31		DECEMBER 2026 SU MO TU WE TH FR SA 1 2 3 4 5 6 7 8 9 10 11 12 13 14 15 16 17 18 19 20 21 22 23 24 25 26 27 28 29 30 31		

To stay informed about state-issued burn bans, visit:

**WWW.NCFORESTSERVICE.GOV**

The images above are examples of burn ban maps, social media content, drought maps and fire danger assessments shared by the N.C. Forest Service during state-issued burn bans. Stay informed about burning restrictions, fire danger and more by following the N.C. Forest Service website and social media accounts.



The N.C. Forest Service is a division of the  
N.C. Department of Agriculture and Consumer  
Services. | Steve Troxler, Commissioner



## You have a county ranger who can help.

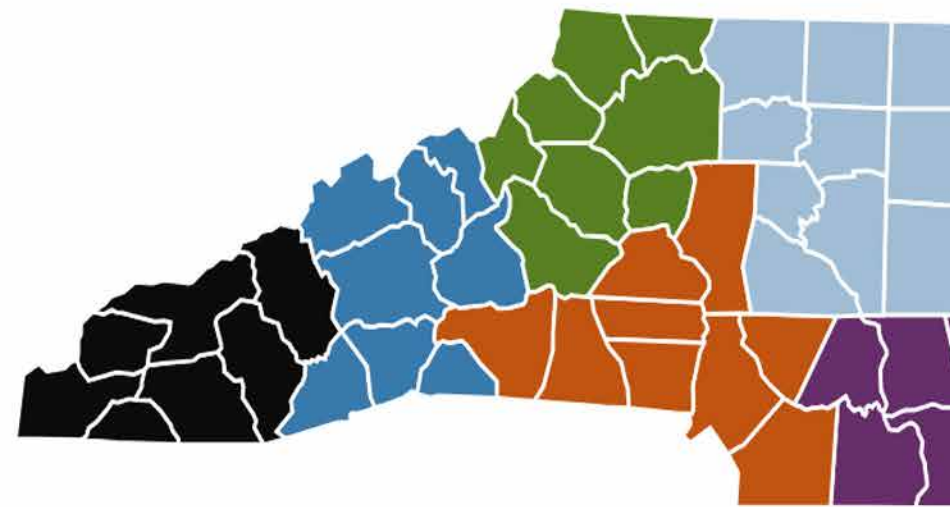
N.C. Forest Service rangers are professionals with expertise in when and how to burn safely. Rangers are a phone call or short ride away, and would rather help you prevent a wildfire than respond to one that results from careless debris burning.

Responsible burners use all resources available to them, including N.C. Forest Service county rangers. Your county ranger can provide you with the local perspective that could save you and your neighbors from the threat of escaped fires.



## N.C. Forest Service - County Offices

Your N.C. Forest Service county ranger is the key contact for your county. Would you like to have a forest management plan for your timber? Is your timber ready to harvest? Have a forest insect or disease problem? Want to join the Forest Stewardship Program or just want to know more about the N.C. Forest Service? Contact your county ranger to get started. Simply select your county





# DECEMBER 2026

SUNDAY	MONDAY	TUESDAY	WEDNESDAY	THURSDAY	FRIDAY	SATURDAY
NOVEMBER 2026 SU MO TU WE TH FR SA 1 2 3 4 5 6 7 8 9 10 11 12 13 14 15 16 17 18 19 20 21 22 23 24 25 26 27 28 29 30	JANUARY 2027 SU MO TU WE TH FR SA 1 2 3 4 5 6 7 8 9 10 11 12 13 14 15 16 17 18 19 20 21 22 23 24 25 26 27 28 29 30 31	1	2	3	4	5
6	7	8	9	10	11	12 World Soil Day
13	14	15	16	17	18 Ratification of North Carolina's Constitution	19
20	21 First Day of Winter	22	23	24	25 Christmas Day	26
27	28	29	30	31		

To find contact information for your N.C. Forest Service county ranger, visit:

**WWW.NCFORESTSERVICE.GOV**

The large photo above highlights the contacts page on the N.C. Forest Service website. Contact information for all forest service offices is available online. The inset photo features a county ranger interacting with and providing guidance for a landowner.



The N.C. Forest Service is a division of the  
N.C. Department of Agriculture and Consumer  
Services. | Steve Troxler, Commissioner



# FORESTRY EDUCATION RESOURCES

## FIRST IN FORESTRY LICENSE PLATES

The First in Forestry license plate recognizes the significance of forestry in North Carolina and the state's status as the birthplace of professional forestry in the United States. The fee for the plate is \$30, or \$60 for a customized plate, of which \$20 is directed to programs that promote forestry education, state forests and the protection and development of state forests, soil, water and wildlife resources.

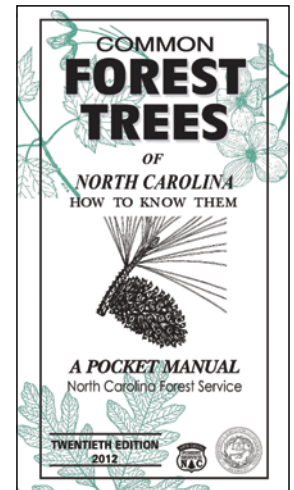
First in Forestry license plates are available for purchase online from the N.C. Division of Motor Vehicles at [www.ncdot.gov/dmv](http://www.ncdot.gov/dmv) and at DMV offices across the state.



## COMMON FOREST TREES OF NORTH CAROLINA AND HOW TO IDENTIFY THEM

More than 20 editions of this pocket guide have been printed since John Simcox Holmes, North Carolina's first state forester, authored the first edition in 1922. Holmes' idea was to provide an easy-to-use reference guide for people of all ages to recognize many of our common forest trees on sight. That goal has not changed.

The pocket guides are available for a nominal cost. Request your copy at [www.ncforestservice.gov](http://www.ncforestservice.gov) > Publications > Education & Outreach.



# NORTH CAROLINA STATE FORESTS

## DUPONT STATE RECREATIONAL FOREST

DuPont State Recreational Forest, the state's first recreational forest, is managed primarily for natural resource conservation, scenic enjoyment and a variety of recreational purposes including hunting and fishing. DSRF spans more than 12,000 acres and includes wooded slopes and granitic domes ranging in elevations from 2,240 feet at Hooker Falls to 3,620 feet at Stone Mountain. Unique ecological communities, lakes, waterfalls along Little River and Grassy Creek, and a multiuse trail system are also found within this forest.

[www.dupontstaterекреationalforest.com](http://www.dupontstaterекреationalforest.com)

## BLADEN LAKES STATE FOREST

Bladen Lakes State Forest (BLSF) covers more than 33,000 acres, making it the largest state-owned forest in North Carolina. BLSF is designated as a self-sustaining demonstration forest, a "show me" forest,

designed to demonstrate operational techniques in reforestation, prescribed fire, road construction, logging, forest product utilization, etc. BLSF is also a working forest, actively managed and creating its own income.

[www.ncagr.gov/divisions/nc-forest-service/state-forests/bladen-lakes](http://www.ncagr.gov/divisions/nc-forest-service/state-forests/bladen-lakes)

## HEADWATERS STATE FOREST

Opened in 2018, Headwaters State Forest is one of the newest state forests in North Carolina. It combines natural resource conservation objectives while providing low-impact, dispersed recreational opportunities for residents. The nearly 7,000-acre property is rugged and remote without public facilities. Visitors should have contingency plans prepared before starting any foot travel activity in Headwaters State Forest.

[www.ncagr.gov/divisions/nc-forest-service/state-forests/headwaters-state-forest](http://www.ncagr.gov/divisions/nc-forest-service/state-forests/headwaters-state-forest)

## EDUCATIONAL STATE FORESTS

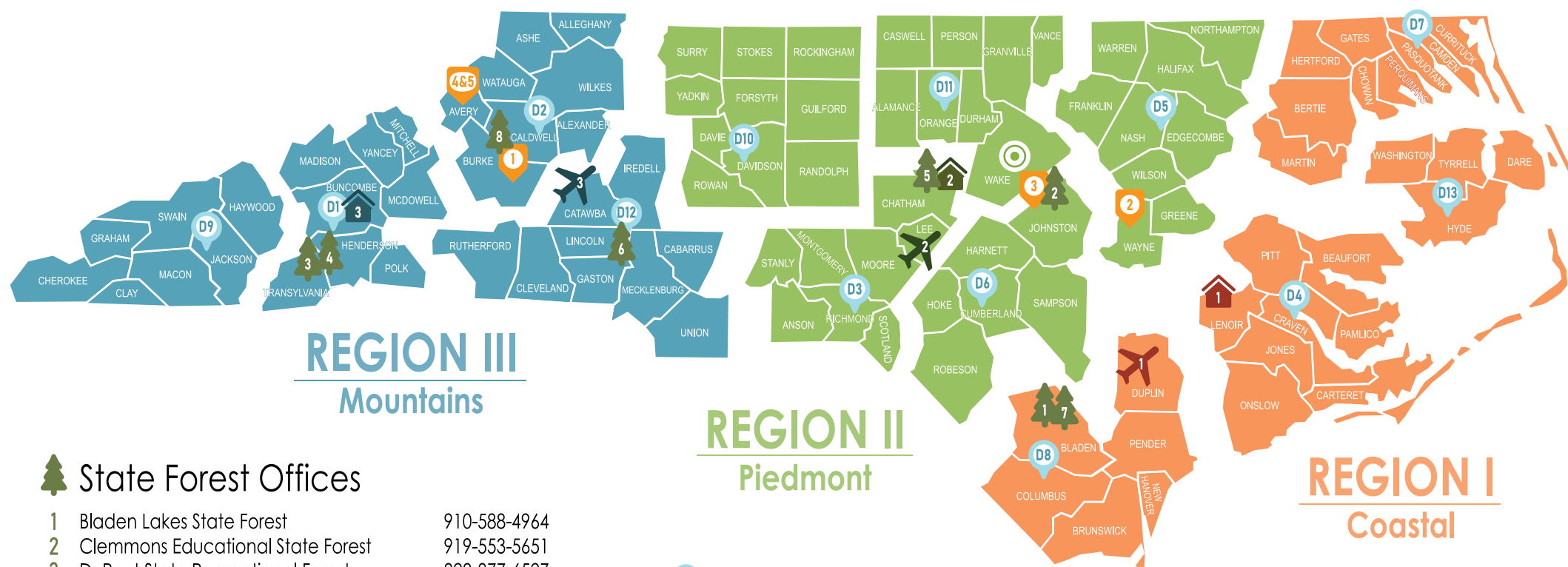
The N.C. Forest Service operates six educational state forests (ESFs) designed to teach the public, especially school children, about the forest environment.

Each ESF features self-guided trails, tree identification signs, a forest education center and a "Talking Tree" trail. Education forest rangers are available to conduct classes for school and other youth groups. Classes are compatible with teaching objectives listed in the N.C. Department of Public Instruction's science curriculum.

Learn more at [www.ncesf.org](http://www.ncesf.org).



# N.C. FOREST SERVICE STATEWIDE CONTACTS



## State Forest Offices

- |   |  |              |
|---|--|--------------|
| 1 | Bladen Lakes State Forest                | 910-588-4964 |
| 2 | Clemmons Educational State Forest        | 919-553-5651 |
| 3 | DuPont State Recreational Forest         | 828-877-6527 |
| 4 | Holmes Educational State Forest          | 828-692-0100 |
| 5 | Jordan Lake Educational State Forest     | 919-542-1154 |
| 6 | Mountain Island Educational State Forest | 704-822-9518 |
| 7 | Turnbull Creek Educational State Forest  | 910-588-4161 |
| 8 | Tuttle Educational State Forest          | 828-757-5608 |

## Other Offices

- |   |   |              |
|---|---|--------------|
| 1 | B.R.I.D.G.E.                              | 828-544-6600 |
| 2 | Goldsboro Forestry Center/Claridge Nursey | 919-731-7988 |
| 3 | Griffiths Forestry Center                 | 919-553-6178 |
| 4 | Linville River Nursery                    | 828-733-5236 |
| 5 | Mountain Training Facility                | 828-733-4242 |

## REGION II Piedmont

### District Offices

- |     |                |              |
|-----|----------------|--------------|
| D1  | Asheville      | 828-667-5211 |
| D2  | Lenior         | 828-757-5611 |
| D3  | Rockingham     | 910-997-9220 |
| D4  | New Bern       | 252-649-6770 |
| D5  | Rocky Mount    | 252-442-1626 |
| D6  | Fayetteville   | 910-437-2620 |
| D7  | Elizabeth City | 252-331-4781 |
| D8  | Whiteville     | 910-788-5050 |
| D9  | Sylva          | 828-586-4007 |
| D10 | Lexington      | 336-956-2111 |
| D11 | Hillsborough   | 919-732-8105 |
| D12 | Mount Holly    | 704-827-7576 |
| D13 | Fairfield      | 252-926-3041 |

- Central Office** 919-857-4801  
1616 Mail Service Center Archdale Building  
Raleigh, NC 27699-1600 512 North Salisbury St.  
Raleigh, NC 27604

- Regional Offices**  
1 Kinston 252-775-6200  
2 Jordan Lake 919-542-1515  
3 Asheville 828-665-8688

- Aviation Bases**  
1 East (Kenansville) 910-275-6520  
2 Central (Sanford) 919-775-7534  
3 West (Hickory) 828-322-8234

To find your county ranger's phone number, visit [ncforestservice.gov/contacts](http://ncforestservice.gov/contacts).  
To obtain a free burn permit, visit [ncforestservice.gov/burnpermits](http://ncforestservice.gov/burnpermits).



***You are the best defense against wildfire.  
Find helpful resources on our website.***

**[www.ncforestservice.gov](http://www.ncforestservice.gov)**



The N.C. Forest Service is a division of the N.C. Department of Agriculture and Consumer Services. Steve Troxler, Commissioner  
8/25