



News Release

Cooperating with the North Carolina Department of Agriculture and Consumer Services
PO Box 27767 - Raleigh, NC 27611 - 919-856-4394
E-mail: ncagstat@ncagr.gov

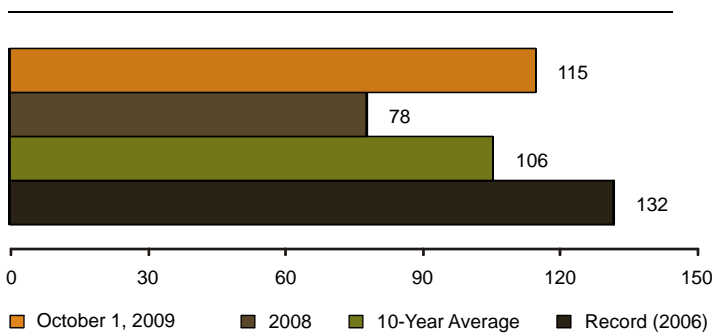
October 9, 2009

NORTH CAROLINA CORN, TOBACCO AND SOYBEAN PRODUCTION UP; COTTON AND PEANUTS DOWN

Corn for Grain

- Yield is forecast at 115 bushels per acre, up 37 bushels from last year.
- Production is forecast to total 92 million bushels, 42% more than last year.
- Harvested acres are forecast at 800,000 acres, down 30,000 acres from 2008.

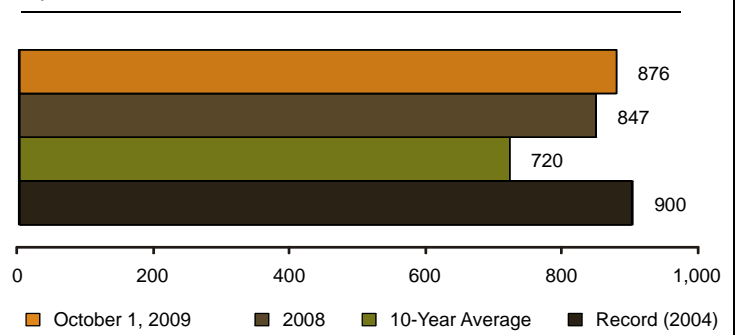
Corn For Grain Yield - (*Bushels*)



Cotton

- Yield is forecast at 876 pounds per acre, up from the final 2008 yield of 847 pounds per acre.
- Production is forecast at 675,000 bales, down 11% from last year's production of 755,000 bales.
- Harvested acres are expected to total 370,000 compared with 428,000 acres harvested in 2008.

Upland Cotton Yield - (*Pounds*)

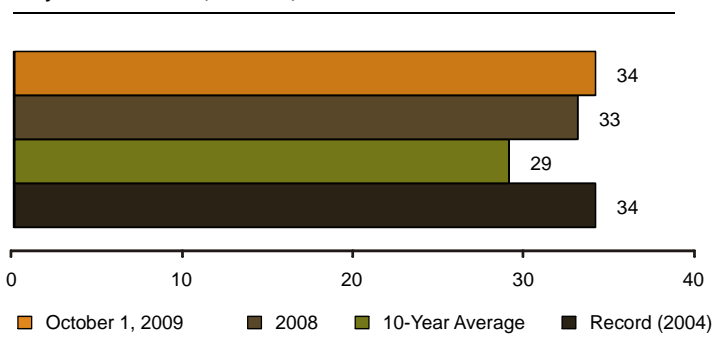


September 2009 Crop Weather: Precipitation during the month improved topsoil moisture statewide. The Mountain and Coastal Plain Regions received the most precipitation. Temperatures were below normal early in the month, but were closer to normal in the second half of the month. Activities during the month included harvesting corn, tobacco, apples, and cutting hay.

Soybeans

- Yield is forecast to average 34 bushels per acre, up 1 bushel from last year and equal to the record set in 2004.
- Production is forecast to total 59.8 million bushels, up 9% from last year.
- Harvested acres are projected at 1.76 million acres, up 90,000 acres from 2008.

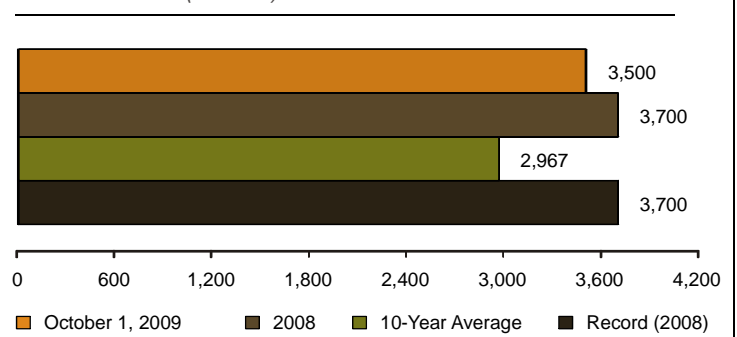
Soybean Yield - (*Bushels*)



Peanuts

- Yield per acre is forecast at 3,500 pounds, down 200 pounds per acre from last year.
- Production is forecast at 231 million pounds, down 36% from last year's production.
- Harvested acres are projected at 66,000 acres, down 31,000 acres from 2008.

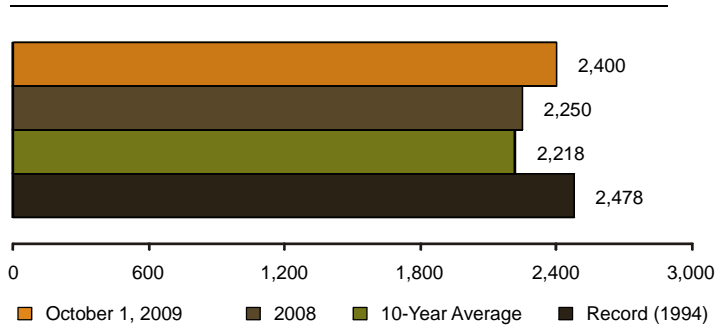
Peanut Yield - (*Pounds*)



Flue-Cured tobacco

- Yield per acre is forecast at 2,400 pounds, up 150 pounds from last year.
- Production is forecast at 417.6 million pounds, 9% above the 384.8 million pounds produced in 2008.
- Acres for harvest are estimated at 174,000, up 3,000 acres from last year.

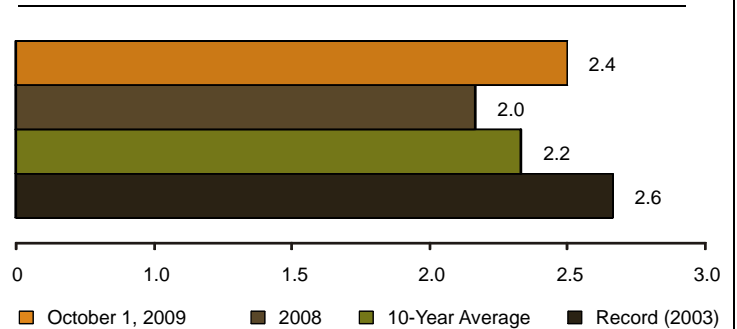
Flue-Cured Tobacco Yield - (Pounds)



Other Hay

- Yield per acre is forecast at 2.4 tons, up .4 tons from last year.
- Production is forecast at 1.872 million tons, 17% above the 1.6 million tons produced in 2008.
- Acres for harvest are estimated at 780,000 down 20,000 acres from 2008.

Other Hay Yield - (Tons)



ACRES, YIELD AND PRODUCTION, OCTOBER 1, 2009

Crops	Unit	Acres Harvested		Yield			Production		Percent Change
		2008	2009	2008	2009		2008	2009	
					1-Sep	1-Oct			
		Thousands					Thousands		+/-
Corn for Grain	Bu.	830	800	78	110	115	64,740	92,000	+42
Cotton: Upland ¹	Lb.	428	370	847	824	876	755	675	-11
Hay: Other	Ton	800	780	2.0	*	2.4	1,600	1,872	+17
Peanuts	Lb.	97	66	3,700	3,400	3,500	358,900	231,000	-36
Soybeans for Beans	Bu.	1,670	1,760	33	34	34	55,110	59,840	+9
Tobacco: All	Lb.	174.3	177.3	2,240	2,389	2,389	390,360	423,540	+8
Tobacco: Flue-Cured	Lb.	171.0	174.0	2,250	2,400	2,400	384,750	417,600	+9
Tobacco: Burley	Lb.	3.3	3.3	1,700	1,800	1,800	5,610	5,940	+6

¹ Production in 480-lb. net weight bales. *Did not forecast September 1